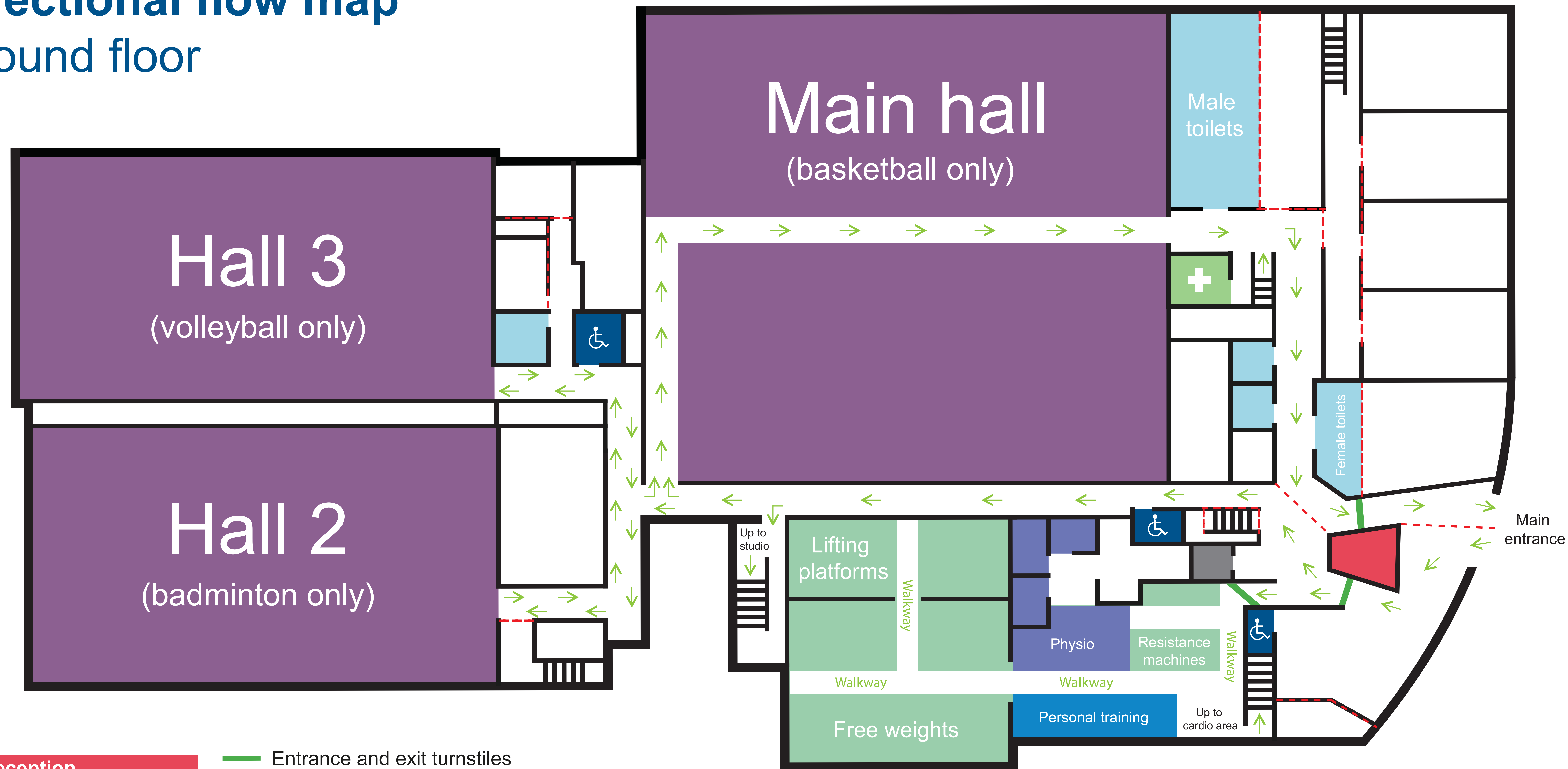


Directional flow map

Ground floor

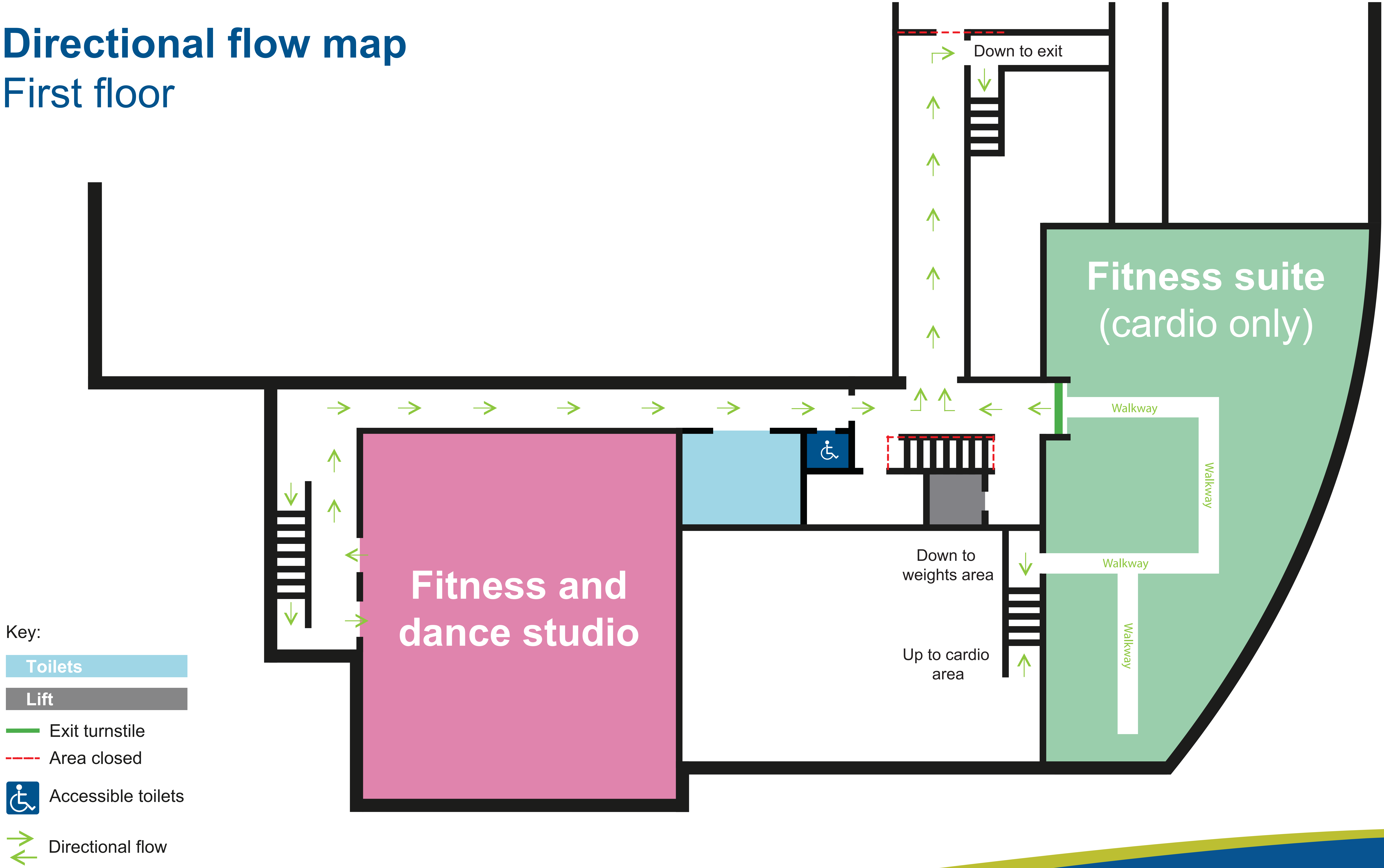


Key:

- Reception
- Physiotherapy Clinic
- First aid room
- Toilets
- Lift
- Entrance and exit turnstiles
- Area closed
- ♿ Accessible toilets
- Directional flow

Directional flow map

First floor



- Key:
- Toilets
 - Lift
 - Exit turnstile
 - Area closed
 - Accessible toilets
 - Directional flow