

2021 Returner Accommodation Application Guide - Canterbury

We have set aside a designated number of rooms across our campus for returning students.

When can I apply?

Application pages to apply to live on the Canterbury campus again for the next academic year (starting in September 2021) will go live on 14 January 2021. Applications will remain open until there is no availability left (or the 31 July 2021 whichever is soonest).

All applications are sorted on a first come first served basis and room demand can be high, so please apply early to avoid disappointment. If you apply after our designated returning student accommodation is full you can request to be added to a waiting list.

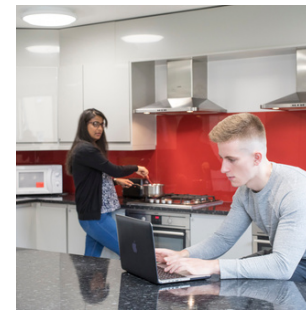
How do I apply?

You will need to apply through your [MyAccommodation portal](#) (which you used to apply in your first year). Don't worry if you have forgotten your login details, you can reset your password with your applicant ID number (which you can ask for in your nearest college reception with your KentOne card).

The process is the same as when you applied for accommodation in your first year. Just make sure you select the correct year (2021-22) that you want accommodation for when applying.

Do I need to pay a deposit to secure my room?

No, we do not require a deposit. All we ask is that in fairness to other students you don't apply unless you want to live on campus and cancel your application before being offered a room if you no longer require it. When you accept your offer the agreement will become binding.



What accommodation can I apply for and how will rooms be allocated?

We have a limited number of rooms across our campus accommodation for returning students in all areas (including en-suite rooms in Woolf College) with the exception of Eliot and Turing College which are reserved for first year students. Rooms will be allocated on a first-come, first-served basis so the earlier you apply the better as there is high demand for en-suite rooms especially.

[KMMS students can apply for KMMS accommodation in Parkwood from February 2021.](#)

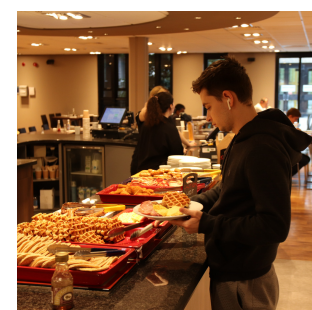
You can select up to four accommodation type preferences (3 minimum). You should only list accommodations that you would be happy to accept to ensure you are only allocated to a room you would want to live in. If you really want to live on campus, we would recommend including at least one non en-suite option within this.

Can I live with friends?

Yes, we will try to accommodate any requests to share with friends wherever possible. When applying to live with friends all your applications will need to do the following:

- You should each include each other's name(s) and ID number(s) within the "other accommodation requests" section of your online application. We will only allocate people together where all applications show they wish to live with the other.
- You will all need to select the same accommodation choices in the same order of preference
- Your group will need to either fill an entire house/flat, or fill no more than 50% of the house/flat you are applying for. For example, a group of five friends could live in a Park Wood five bed House as they fill it, or a Keynes House as they only half fill it, but could not live in a six bed Park Wood House as this would be unfair to the final student living in the house.
- If there is a large group of you, you should apply early to allow us the best chance to keep you all together in your preference.

All of these guidelines must be met to allow us to fulfil requests to live with friends. Where requests don't meet the above, groups may be broken up.



How much will it cost and what's included?

There are no application or deposit fees to apply for returning student accommodation. [Our 2021/22 accommodation prices](#) are available online.

Included in your accommodation fees are all the energy bills (electricity, Wi-Fi, water and heating), personal contents insurance, [free Kent Sport membership](#) and your catering plan if you select a part-catered accommodation.

When will I find out if my application is successful?

If you apply early, you will be contacted by the Accommodation Team via your Kent email as to whether your application has been successful on Friday 29 January 2021. Your actual room allocation and detailed offers of accommodation will then be sent out from March 2021.

Can I change my preferences in my application after applying?

Yes, you can [log in to your application online](#) and update your room preferences until March when accommodation offers are being sent out.

How do I accept my offer?

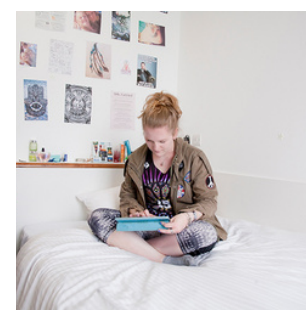
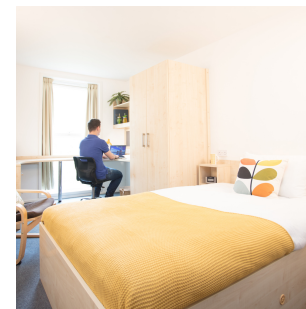
Once you have received your allocation (from March onwards) you will need to log into your [MyAccommodation portal](#) again and accept the offer within seven days of the offer being sent. You will then need to complete your accommodation e-induction before arriving.

Is there Medway returning student accommodation?

Yes, you can live in Pier Quays throughout your time at university. [See our Medway returning student accommodation information online.](#)

Will I be able to stay in my current room/leave belongings on campus over the summer?

Currently this would not be possible, however we have vacation accommodation set aside so that rooms are available on campus for those who need them, although you will need to move to a different room for the vacation period with your belongings. More information about [vacation accommodation](#) is available online.



Can I cancel my application after applying?

You can cancel your application before accepting your accommodation offer.

Once you have accepted your accommodation offer this will become legally binding, however if you change your mind after accepting we can cancel your agreement as long as you notify us of your change of circumstances **before Friday 9 April 2021**.

I am a KMMS student. Do I need to apply differently?

KMMS students can also apply to return to live in Park Wood from February 2021. As KMMS accommodation is offered on a different contract length to match your course dates, you will need to apply via a dedicated link which will be emailed to you by the Accommodation Office before applications go live in February. Find out more at www.kent.ac.uk/accommodation/canterbury/kmms#returners

Do I need to be a postgraduate student to apply for Woolf College? Will postgraduate and undergraduate students be mixed?

You do not need to be a postgraduate student to apply for Woolf College as flats for both undergraduate and postgraduate students will be available. Each flat occupancy will be made up of all undergraduate or postgraduate students.

Will there be Covid-19 restrictions still be in place?

We cannot currently predict how the pandemic will develop into the 2021/22 academic year. Our first priority will always be to keep our students, staff and guests to campus safe. As such we will be following any government and industry guidelines in place at the time and continue to update both our [Accommodation Coronavirus FAQ page](#) and our [Accommodation Coronavirus Policy](#).

I have a question that hasn't been answered here. Who should I ask?

If you have any other questions please get in touch with us in the Accommodation Office. You can call (01227 766660), email (accomm@kent.ac.uk) or message us via [Twitter](#) or [Facebook](#).

