

Special Collections  
LD407 K7

INTRO WEEK SPECIAL... INTRO WEEK SPECIAL.

# KREID

The Weekly Newspaper of UKCSU

Sunday 30th September 1990

No.126

THE TEMPLEMAN  
LIBRARY  
UNIV. OF KENT  
- 2 OCT 1990  
CANTERBURY

## Fair Rent or No Rent!

In October 1990 the grant stands at £2,265. This represents an increase of 5% on last year. Meanwhile, the University has increased rents by 13%, food prices by 15% and bar prices by 12%. It has also increased fees for overseas students once again.

These increases were announced on June 1st, at University Court (its highest body) before they had gone through any form of consultation. When they did go through the University committee structure they were pushed through with threats of job losses to the trade unions if things happened otherwise.

The Students' Union has formally requested the University authorities to reconsider the increases it has imposed. At the referendum on Monday October 8th and Tuesday October 9th all students living in University owned accommodation will be asked if they will support a rent strike based on the demand,

"The students of the University of Kent at Canterbury request the Vice Chancellor and Financial Secretary to propose reductions in the rent, food and bar increases."

This same demand will then be placed before all students, living in University accommodation or not, at the Union General Meeting on October 11th.

### Why a fair rent campaign?

"We...are planning a significant increase in student numbers...and have a sound financial basis to go forward with." - David Ingram, Vice Chancellor's welcome, UKCSU Handbook/Diary 1990/91.

Neither Government nor University are prepared to fund this expansion. They want students to pay for it, hence the increased prices.

But, it is clear that student financial support is inadequate. This is especially so in Kent where students

face the high living costs of the South East without the extra weighting given to students in London.

Overseas Students who subsidise the University through their fees are being made to further subsidise it through higher rents.

We believe enough is enough. The University must recognise its responsibility for its students welfare. It cannot be allowed to simply mumble "financial considerations" while increasing rent, bar and catering prices over the rate of inflation.

### Why a rent strike?

"The Rent Strike is one of the Student Unions most effective weapons for bargaining with the college administration" - NUS Wales Briefing 1984-5.

There will be no rent strike unless you support it. However it is clear that rent strikes can be the means by which University authorities to negotiate. This is the recent experience of Heriot-Watt University, Southampton University, Leeds Polytechnic, Manchester Polytechnic and Cambridge University.

As well as at Kent, Student Unions at Teeside Poly, Bristol University, Bradford University and Sterling University are threatening rent strikes over rent increases and accommodation. Lancaster University has already reduced its proposed rents from £29.40 to £25 per week. Students there will be voting on October 11th whether to accept this compromise.

If these inflationary rent increases are implemented it will set a precedent for the future. It will also have a knock-on effect in the Canterbury area as Landlords increase their rents accordingly.

Please make a stand now. Support the Fair Rent Campaign and support the Rent Strike.

## ...NOTE...NOTE...

The University Regulations state that rent does not have to be paid until Friday 12th October.

**DON'T PAY UNTIL YOU  
HEAR THE REFERENDUM  
RESULT.**

## President's Welcome

Welcome to Kent! As a student at Kent University you automatically become a member of this Students' Union. This, in turn, gives you all the benefits of Student Union Membership.

Firstly, and most importantly, you get representation. The Students' Union is represented on almost every University Committee - ranging from Library Committee, Council and Senate to Smoking Committee and Residences Committee. Added to that, the Students' Union has informal meetings with Masters, medical staff, academic staff and even bank managers! What this all means is, if the University think up a nasty plan to get more money off you, we will do our best to stop them!

Nationally, the Students' Union gets representation through NUS (National Union of Students). Any new legislation affecting students - NUS will have its say. It arranges block discounts for your Union Shop and provides the training for me to do my job!

But there's lots more to the Students' Union. We fund the Sports Federation, which enables you to try nearly any sport you can think of. There are societies for budding ski fanatics, (the lack of mountains doesn't stop them), as well as for trampolinists, boxers, tennis players, swimmers and lots more!

Then there's entertainment. We provide regular entertainments in the colleges - ranging from discos and bands through to game shows, poster sales and craft fairs. Each college has their own ents representative who liaises with the Social Secretary, Jason Phillips, to get the entertainments you want. Added to that there are video games, pool tables, change machines and juke boxes.

Welfare is another important area of the Union. The Research and Rights Department can provide you with assistance on how to claim benefits, (what few are left!), help you with your landlord or any legal matter, and provide you with exam papers and essays. While the Womens' Officer and Welfare Portfolio will give you advice on safer sex, sexual harassment and campaign to improve disabled access.

There are a diverse range of societies you can join too, from cultural societies to recreational and political societies. All of them provide good value for money, and can be found at the Freshers' Bazaar.

The Students' Union campaigns too; for lower rents, against the Poll Tax, for a free education for all, for better services for overseas students, for womens' rights, better safety on campus and for much more. Policy is made democratically at Union General Meetings - so come along and hear the arguments, and vote for what you want your Student Union policies to be.

On top of that, you have your very own campus newspaper - KREID, a second-hand bookshop (which is far cheaper than Dillons), and the Student Union Shop.

So please, get involved in your Union - join the campaigns, help organise them and decide what you want them to be. If you have any problems, or you don't know who to approach, or you simply want a chat - come and see me, and I'll do my best to help.

All the best for the year ahead!

Bryan Davey  
UKCSU President

**STOP PRESS**

**Laundry Charges  
Increase 25%**

Not satisfied with inflationary rises in food, drink and accommodation prices the University has decided to increase the cost of doing your washing.

There is no justification for the rise from 80p to £1.00. The machines have not been improved. Opening hours have not been extended. Indeed, the queues will worsen as the University 'recruits' more students to use the same cramped services.

There is only one explanation - PROFIT. This is yet another tax on living at UKC.

# This is KRED

Welcome to KRED, the Weekly Newspaper of UKCSU. It is perhaps the most important link between the Students' Union and YOU, the student. Every week, Campus news, student issues, ents and societies' notices are carried in KRED. There are also features, reviews, political articles and a chance for you to air your views on anything through the KRED letters page.

KRED is entirely written, designed and produced by students. If you are interested in writing articles, taking photos, drawing cartoons, page design, or if you just fancy yourself Editor of the Sun in 20 years time, come and see us at the KRED stall at the Societies' (Freshers') Bazaar. If you miss us there (and shame on you!), then come to the intro meeting on Tuesday at 6pm (straight after "Neighbours" in student-speak) in Keynes JCR3, near the porters lodge. Just bring along a biro and a hat with "press" written on it!

**Rhys Lewis**  
Editor.

Articles, letters, notices or any other contribution for inclusion in KRED must be handed in at the reception in the Mandela Building by 2pm on Tuesday for publication the following Monday. Features should be no longer than 350 words, letters 200 words at the very most.

## HOMELESS STUDENTS & THE POLL TAX

Students who are currently not living in a 'regular and fixed' address or have been homeless [whether they are sleeping on someone's floor or sleeping rough], should register themselves with the City Council and claim exemption from the Poll Tax.

Any claim should mention between which dates [if possible] you have been homeless. By registering you will not only be exempt from the Poll Tax [for the time you are homeless] but also will cause no end of administrative chaos for the Council!

### WANTED

The University's late-night minibus service desperately needs **DRIVERS**. If you are over 21 years of age, hold a current-clean driving licence and are willing to earn over £4.00 an hour driving the University minibus, you maybe what we are looking for!!!

If you are seriously interested please come and see Helga Swidenbank at the Students' Union Building as soon as possible.

**Helga Swidenbank,**  
Women's Officer.

### ROOM BOOKINGS - KEYNES

To book a room, go to the Master's Secretary's Office - Mon. to Fri. - 9.30 - 1 p.m. One week's notice is required; two weeks if an outside speaker is present.

### KREDITS

Editor.....Rhys Lewis  
Asst. Ed.....Lisa Martland  
Admin. Manager.....  
.....Paul Hewitt  
Typing.....Di & Fiona  
Lay-out Consultant.....Trish  
KRED is published by  
UKCSU and printed by  
Pyramid Press, Bristol.

# SOCIETIES NOTICEBOARD

## COMMUNITY ACTION VOLUNTEERS

Students needed to work on a wide range of projects in the community including a university access scheme for teenagers from under represented groups, gardening and shopping etc with old people, visiting a resource centre for people with physical disabilities, arranging outings and parties etc. Come and join at the Freshers' fair; or come along at the meeting from 12 - 2.00 Thursday 4th July, Lyons Room, Eliot (above the airport lounge).

## SOCIETIES' FINANCE COMMITTEE

First meeting Wednesday 3rd October, 2pm Keynes JCR3. Any society that failed to get a budget form last year must contact the treasurer in advance.

**Labour Club** Intro and social meeting 8pm, Wednesday 3rd October, Keynes JCR3.

**Oxfam** intro meeting and talk in Keynes on Oxfam's work, Oct 8.

## KENT RAG

Just a quick welcome from Rag. If you don't know who we are, you hopefully soon will do as we (and possibly you as well) are the group of people seen around campus dressed up, doing stunts and looking v. sexual in the name of charity. YES - we are the FUND RAISERS - taking money on behalf of Dr. Barnardos, The Terence Higgins Trust, and locally the Wincheap Centre. It's a good laugh, and very rewarding so if you have the guts to organise, the talent to create or most importantly the ability to have fun - we want you!

Check our posters, contact us under Rag on Rutherford urgent notice Board and come to our events. Good luck.

## SPORTS FED.

Each week, along with all the sports reports, this Sports Fed. column will be telling you what sporting events are taking place, as well as any social dates to place in your diary.

To 'Kick Off' the new term most of the sporting societies have something planned. Find out exactly by meeting them at the Freshers' Bazaar. Local leagues and weekend trips will start in earnest and the Inter-University competition starts on 24th October away to Imperial College.

Most Monday nights a club hires 'Studio 3' [our one and only nightclub]. This starts next week on 8th October. Tickets will be on sale in colleges and at the Sports Federation office in the Sports Centre.

For those of you who are keen on recreational pursuits we have canoe, caving and mountaineering clubs. If you want to find out more about these activities why not go along to the following evenings :

**Caving:** Thursday, 4th October 8 p.m. Rutherford Post Grad. Common Room.

**Canoe:** Sunday, 7th October, "Get Together" at the Riverside

**Canoe:** Wednesday, 10th October - "What is canoeing?" Rutherford Postgrad Room

**Mountaineering:** Tuesday, 9th October 6.30pm. Slideshow on past pursuits. KLT2

## MATURE STUDENTS SOCIETY INTRO MEETINGS

Tuesday 2/10, 12-2pm Eliot Chilver Room : Tea/Coffee Meeting

Wednesday 3/10, 12-2pm Eliot Chilver Room : Tea Coffee Meeting

Thursday 4/10, 7-11pm Eliot Lyons Room : Intro Party

## UKC Radio Intro Week Timetable

	8	10	12	2	4	6	8	10
<b>SUN</b>		Music To Unpack To.	Paulette Dowson's Pillow Experience	The Mutant Ninja Teapot Show	The Alternative Chart Show With Daniel Rigal	The UKC Rock Show with Nick Hughes	The De-caffinated Banana Show With Chris Perry	
<b>MON</b>	<b>The Breakfast Show</b>	Live From The Freshers Bazaar			Realty Asylum With Sam	Mc Doe C Doe	"Sleeping Single" With Benjamin Ellis	DJ Mite's Late Night Style
<b>TUES</b>		Ian Wickens	The Crozers	Nick Hughes in the Afternoon	The New Sensation With Stu	Between the Sheets with Ken T	Ben & Sam At The Bar	DJ Mite's Other Late Night Style
<b>WED</b>		Outside Broadcast from Darwin Bakery with Ian Wickens	Daniel Crozier	Hutchinson's Half Hour	Udio	Between the Sheets with Ken T	<b>Rave!!</b>	
<b>THUR</b>		Ian Wickens	Daniel Crozier the 2nd	Pleasure And Payne	Nigel John	Tony Pope	Rob Walker	Pillow Talk With Paulette
<b>FRI</b>		Ian Wickens	Daniel Crozier Jnr	Aimless And Boring With Rob Lewis	The New Sensation With Stu	Nik Lawrence	The Ice Bun Show With Debbie Young	The SOD OFF Back Home Christmas Special
<b>SAT</b>			Jazz & Real Soul	Udio's Saturdays Sequence	The Mutant Ninja Teapot Hour	The Chart Show	"Sleeping Single" With Benjamin Ellis	Dave Andrews
<b>SUN</b>			Jazz & Real Soul	Hutchinson's Half Hour	The Future Makers	The Alternative Chart Show With Daniel Rigal	The UKC Rock Show with Nick Hughes	The De-caffinated Banana Show With Chris Perry

Love Rag

## UKC RADIO - A FRESHER SOUND!

UKC Radio, the University's own radio station, run by and for the students of UKC, is all set for the next year in its long record of broadcasting.

As far as music is concerned, UKC Radio will be catering for all tastes as much as ever, with its ever popular specialist dance, rock and indie programmes adding to a large amount of quality 'across the board' output, with all the latest hits [and those that should be!] alongside many great oldies and classics drawn from the Station's comprehensive record library, now in its third decade and still growing weekly. More than ever before, U.K.C.R. is encouraging the 'phoning in of requests on [FREE] internal 'phone 3301 to reinforce its role as UKC students 'Free Campus Jukebox'!

# OCCUPATION UPDATE

"It can be hard to persuade academics to recognise the threat to women and students have sometimes resorted to direct action. Hundreds occupied the registry building at the University of Kent for three days in December last year after a rape in a hall of residence. New safety measures, costing the university nearly £300,000, will now come into effect this term." - The Guardian, September 26th 1990.

At the beginning of December 1989, students at UKC, angered at the lack of response by the University to the issue of safety on campus, successfully occupied the Registry, the heart of university administration.

Nearly a year later the Students' Union is still working on the demands agreed to by the University. What follows is a brief(ish) update of what has been achieved, and what we would like to see achieved in the future.

'**FREE INTERNAL TELEPHONES**' have been put into Parkwood houses. These will be connected to the 'Boiler House', (where the security guards are based), and can be used in the case of emergencies. Darwin houses are next on the list for installation.

'**AT LEAST TWO PORTERS ON DUTY AT ALL TIMES IN EACH COLLEGE**'. Each college has appointed additional porters for night duty from 10pm to 6am.

'**A MINIMUM OF 10 SECURITY GUARDS**', to provide escorts for students as and when necessary. Reliance security guards will be on campus from 7pm to 7am every night. Should you require an escort anywhere across campus, go to the nearest porters lodge and a porter will call the nearest guard.

'**WINDOW LOCKS**' have been put on all ground floor windows.

'**SPY HOLES**' have been fitted to all residential study room doors.

'**LIGHTING IMPROVED AROUND CAMPUS**' is gradually being done, extra lighting should be placed in Parkwood by the beginning of term and the area around the Gulbenkian has been re-lit. Other areas are under constant review, if you know of any areas which you feel require more lighting, please inform the Women's Officer.

Along with all that hardware, '**SELF DEFENCE CLASSES**', paid for by the University, have been arranged for the Michaelmas Term. They will begin on Wednesday 10th October, for eight consecutive weeks. Two sessions have been arranged, the first from 12.30pm to 1.30pm will be for staff, while the second from 3pm to 5pm is for students. These sessions will take place at the Sports Centre. For more information please contact the Women's Officer or Sue Linge at the Sports Centre.

'**NIGHT MINIBUS SERVICE**', paid for by the University, should be up and running from October 3rd. The free minibus should leave the Student Union building from 11.45pm, and will provide a door-to-door service to Canterbury, Whitstable and Herne-Bay. On nights when there are entertainments the minibus will be leaving later. We always need more drivers - if you are interested please see the Women's Officer.

Looking to the future, we must ensure that the University authorities do not back track or cut back on the demands of December 1989. We must also consider and campaign for more educative measures to dispel the myths which surround rape and sexual violence, and call for more support for the victims of such violence.

Despite the above measures, UKC is not a safety Utopia. Until everyone is made aware of the issues surrounding rape and sexual violence, fundamentally nothing will change.

**Helga Swidenbank**  
Women's Officer

The next meeting of the Safety Working Party will be on Monday 29th October. If there are any points you would like raised, questions asked, or suggestions made, please tell me.

## Southampton prove Rent Strikes work

In 1989, Southampton University decided in its wisdom to stop cooking its hall of residence meals in hall and replace them with a 'Cook/Chill' system. Under this, food was prepared in the rather grandiose sounding 'Central Production Unit' and then cooled down until needed, when meals were heated-up. This system has been known to work and to produce good quality food, but the University fouled-up by getting rid of all their cooking staff and employing the hall cleaners to serve and prepare meals after no training at all on modern, high-tech equipment. In all, a recipe for disaster.

To be blunt, hall meals went from being rather bland, but edible, institutional food to a disgusting, dry, cold mess. Even the people preparing it were embarrassed to give it out, with comments like: 'Sorry love, I wouldn't give this to my own kids' and one hall simply took to throwing it away and cooking something else instead. No one was able to eat what they were given and people took to buying take-aways as there are no proper cooking facilities for students in catered halls.

Obviously, the first step was for students on-hall J.C.R. Committees to make representations to hall managers and wardens, but this had little effect as the problem lay much higher up. Also, once the system had been introduced it was hard to get rid of the problems. Eventually, the food slowly began to improve back to its normal mediocre level and an apology was received, but this was hardly compensation for four weeks of absolutely inedible food.

The three J.C.R.'s decided to seek compensation for members having to buy food outside instead of eating meals that should have been provided which they had already paid for. This was then taken to a Union Meeting and a Rent Strike Fund was set up. This was based on the N.U.S. model constitution and was used to collect all rents owed to the University by members of the halls concerned. Hence, the University was forced to negotiate with the Fund and its representatives rather than take action against individual students. The rapid collection of hall fees showed that people were serious about the dispute rather than just looking for an excuse to keep hold of their money for a bit longer.

After a few rounds of negotiations with the University, during which they finally began to take our arguments seriously, we were given £15,000 compensation, which amounted to over £50 per person involved.

I hope this story shows that rent strike action can work if it is over a specific issue, involving the students taking the action and deals with a dispute with the college authorities rather than vague political posturing.

Best of Luck.

**Matt Price, Treasurer, Southampton University Students' Union.**

### Students get Conference

#### Accommodation !?

Here follows an excerpt from the University's minutes of its College Services Management Committee held on June 8th 1990:

"It was commented that students would be paying for accommodation really intended for conferences."

And you thought the University was built for students!

## UKCSU Shop = Owned by your Union and run for your benefit

**Compare our prices  
with the High Street!**

200 Leaf Refill Pads..... £1.60  
100 Leaf Refill Pads.....98p  
Ring Binders.....73p  
Lever Arch Files.....£1.40  
Subject Dividers.....40p  
Document Wallets.....18p  
Desktop Staplers.....£1.19  
Ecology Refill Pads - 100%  
Recycled paper....£1.60

Large Blu Tac.....£1.00  
Basildon Bond Writing Paper;  
Large.....£1.68  
Medium..£1.38  
Small.....78p  
Basildon Bond Airmail Paper;  
Large.....£1.79  
Medium..£1.67  
Small.....£1.06

**ALSO THE BEST SELECTION OF**  
**SWEETS ★ GREETINGS CARDS ★ PENS ★ PENCILS**  
**★ BATTERIES ★**

**UKCSU Shop - Saving you money on the things you need**

# The KRED

## Banking Survey



When you first arrive on campus you will find banks simply falling over themselves to get you to open an account with them. There will be a massive array of "freebies" laid out in front of you to entice you. If all banks were alike, offering the same services, then comparing "freebies" would be sensible. However, they are not! This article is meant as a guide to the services available. I hope you will be able to decide what is most important to you and what you want from a bank. But first some general advice....

Before deciding where to put your money, it is probably a good idea to talk to fellow students - they will often be able to tell you who is helpful and who is unreasonable!

You may find it useful [after the mad first few weeks] to budget. But be realistic - the last thing you want to be doing is vegetating in your room getting thoroughly miserable or living off tomato soup and toast! Think about whether you are prepared to go into overdraft and if so, by how much.

If you have money problems or need an overdraft [or overdraft extension] - visit your bank, and talk to the Manager or Student Advisor. If you don't, you could face a confrontation later.

If you have an account with your home branch, think about how much that branch can offer you. If your branch is Boggertwaite sub-branch, 150 miles away, is open two days a week and the manager does not know what a student is - transfer branches! Some branches are used to dealing with students - others are not! And the last thing you want to be doing is travelling long distances just to get an overdraft extension.

Lastly, remember you are not tied for life to your bank. If your bank is unreasonable, change! Most banks will accept transfers while you are in overdraft [depending on circumstances].

	<u>MIDLAND</u>	<u>LLOYDS</u>	<u>NATWEST</u>	<u>BARCLAYS</u>	<u>T.S.B.</u>
Campus Branch	Yes	Yes	Yes	Yes	No
No. of Cashpoints ON Campus No. you can use	0 1	1 2	1 1	1 2	0 1
No of Cashpoints OFF Campus [Outside] No. you can Use ...	4 10	2* 5*	4 10	2 5*	2 10
Deposit Points [outside normal opening hrs]	Yes	No*	No	No	No
Free Overdraft Facility	£300	£300	£300	£250	£300
Larger Overdraft [% A.P.R.]	16%	15.3%	NEG.	NEG.	22%
Interest on Current Account [% A.P.R.]	8.58%	7%	6%	4%	5.5%**
Opening Hours on Campus	10 - 3	10 - 3	9.30-3.30	9.30-4.30	N/A
Opening Hours in Town [Main Branch]	9.30 - 5.00	9.30 - 4.30	9.30 - 4.45	9.30 - 4.30	Mon-Thurs 9.30 - 4.00 Fri. 9.30 - 6.00
'Freebies'	£25 + Free Coach Card	Free Y.P. Rail Card - Travellers Cheques + Eurocard	£30 + Prize Draw	£30 Record Token or £20 free Filofax	Free Speedlink Telephone
Banking					
Credit Card [% per month]	2.2%	1.9%	2.2%	1.85%	2.3%
On Campus Manager	No	No	Yes	Yes	No
Student Advisor	Yes	Yes	Yes	Yes	No
On-Line Banking***	No	No	No	No	Yes
Cheque Guarantee Facility	£50	£100	£50	£50	£100
Maximum Withdrawal on Cashpoint Card [providing funds are available in the account]	£200 per day	£200 per day	£50 per week	No limit	£200 per day

\* Lloyds will shortly be transferring to a Lobby Service in town, increasing their cashpoints from 2 to 4 and installing Deposit Points.

\*\* Over £500 = 7.5%. Over £2000 = 9%

\*\*\* Any cash deposited at any branch in the U.K. is automatically available for withdrawal. Usual delay is one day.

[The Students' Union accepts no responsibility for an inaccuracies contained in this article].

Bryan Davey  
S.U. PRESIDENT



# Rent Striking - Nationwide

## Cambridge

In May 1989, students at Homerton College, Cambridge returned from the Easter vacation to find their college under refurbishment leaving many without the facilities they had paid for. Despite this the trustees decided to impose a rent increase in line with inflation. Following the rent strike that followed the trustees were forced to reduce the rise to 4.5% (3% on food, 1.5% on rent) AND distribute £20,000 compensation in lump sums of £30 - £200 to students affected by the building work.

[Source - Duncan Ross, VP Communications, Cambridge Union]

## Leeds

Students at Leeds Polytechnic's Becketts Park also went on a rent strike over security, specifically the lack of fire fighting equipment and the danger of fire through faulty wiring. The rent strike began in October 1989 and by 10th November, "Leeds Student" reported "Victory at Becketts Park" with the authorities agreeing to an extensive list of demands.

[Source - The Leeds Student 27/10/89, 10/11/89]

## Manchester

In January 1990 residents of Cavendish Hall, Manchester Polytechnic withheld rent for two weeks. The action was over the inadequacy of security in residence halls and the general lack of facilities. Within two weeks of the rent strike the Polytechnic authorities gave in to the demands of their students and provided intercoms in each kitchen, security locks on outside doors, irons, lamps and locks for freezers.

[Source - Pulp, Issue 9, 1989/90]

## BUYING A COMPUTER?

Read the Student Computing extra in the Autumn issue of National Student Magazine [N.S.M.] available in the Mandela Building.

NUS Services provide a free STUDENT COMPUTER GUIDE. For details see NSM or write to Computer Guide, NUS Services, Ltd., FREEPOST, Glossop, Derbyshire, SK13 8YP - no stamp required!

The NSM Computer Guide also includes details of the Barclays 'Futures' loan negotiated by NUS Services allowing unsecured personal loans of up to £2000 to purchase a computer.

**Paul Hewitt**  
GENERAL SECRETARY

## STOP PRESS

Through NUS Services, the Observer newspaper is offering a book of 52 '30p Off' vouchers and 'The Observer Watch' for the first thousand applicants.

Details from Mandela Building or see leaflets.

## Heriot-Watt, Edinburgh

Perhaps the most famous rent-strike of recent times is that at Heriot-Watt University, Edinburgh, where 80% of the 800 students living in university accommodation joined the protest. They withheld payment in protest at the University's decision to impose a rent increase of 12%. The rent strike made the national papers. As at Kent, the Students' Union guaranteed to accept full responsibility for late-payment fines. The most tangible results are shown in Heriot-Watt University's decision to limit rent increases throughout the 1990's to 6-8%, and to accept student representation on their Board of Management Committee.

**Southampton's** rent strike is covered in the article by Matt Price, Southampton SU treasurer on page 3.

Here at **Kent**, we have had two rent strikes in the last ten years. The first, in 1981-2 succeeded with a £65,000 total rebate, and a promise that the university would never again try to make profits on rents.

The second, in January 1989 failed for various reasons. These include not stating specific demands to those students being asked to take part, imposing the rent strike without consultation e.g. a referendum, calling the rent strike without the specific reason of rent increases, never mind bar and catering increases. These mistakes have not been repeated. We are confident that if you support the rent strike then it will succeed.

## UNION GENERAL MEETING

### DARWIN DINING HALL

October 11th 1990

Motions Close  
Thursday 4th  
See Gen Sec for details

## CAR OWNERS

**WARNING!** The University will start imposing Car Parking fines again from Thursday, 4th October, 1990 for parking on double yellow lines, grass verges, fire roads and reserved spaces. Fines for other parking offences will be imposed from Monday, 8th October.

You will, of course, be glad to know that most fines have been increased 20% to £12 [£20 clamping fine for some offences]

If you encounter problems, please contact the President, Bryan Davey and please inform us of any complaints you make to the University.

# The Fair Rent Campaign Account

This High Interest Account has been opened at Barclays Bank on campus. Its aim is to safeguard the money of those joining the rent strike. By paying the full rent requested by the University into this holding account, you will be able to keep your rent money separate from your other financial concerns. The account is already open for those members who wish to join the rent strike in advance of the referendum result.

The account will be administered by Bryan Davey (President), Paul Hewitt (General Secretary), and myself (Treasurer). It will at all times be kept separate from the funds of the Students' Union.

When coming to make a payment into the campaign account, please bring with you a copy of the University's letter offering you accommodation. This is for administration, and will be returned to you immediately. Payment should be by cheque, made payable to 'Fair Rent Account'. Having made your payment you will receive a numbered receipt, please keep this receipt in a safe place. You may, of course, remove your money from the account at any time during the campaign.

After the campaign has been successful, the difference between the rent you paid into the account and the final rent paid to the University, will be returned to you. The interest accumulated in the account will be used to offset the cost of any fines. Fines will only be paid in on behalf of those who contributed to the campaign account. If you have any questions on this or any other part of the campaign please do not hesitate to contact me.

## How to join the Fair Rent Campaign

To pay money into the account - the Treasurer will be holding stalls from 12.15pm until 1.45pm in the following places:-

<b>TUESDAY 2ND OCTOBER</b>	<b>DARWIN</b>	top central staircase
<b>WEDNESDAY 3RD OCTOBER</b>	<b>KEYNES</b>	bottom dining hall staircase
<b>THURSDAY 4TH OCTOBER</b>	<b>PARKWOOD</b>	(to be arranged)
<b>FRIDAY 5TH OCTOBER</b>	<b>RUTHERFORD</b>	between bar and dining hall
<b>MONDAY 8TH OCTOBER</b>	<b>ELIOT</b>	between bar and dining hall

There will be an all day stall at the Freshers' Bazaar on Monday 1st October.

The Treasurer will also normally be available in the Mandela Building, from 8.45am to 5.30pm weekdays, and 10.30am to 12.00pm on Saturdays.

Any resident may contact me at any of the above times and venues. Please do come along if you have any questions, or come and sign the petition in support of the Fair Rent Campaign.

**Neil C Foster**  
SU Treasurer

## Grand Oriental Indian Cuisine

10% Discount on Production of Student Card

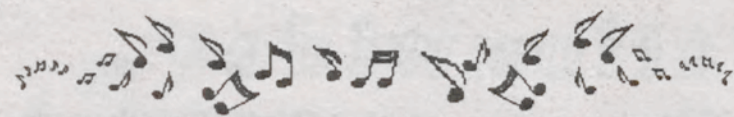
Free Parking

6, Safeway Precinct  
St. Georges Place  
Canterbury



Canterbury 764039

**FIRST YEAR BALL TICKETS  
ENTS & FILM CARDS  
ALL AVAILABLE FROM  
THE SOCIETIES BAZAAR**



**KRED ENTS POLL  
TWO PAIRS OF TICKETS  
TO ANY MAJOR ENT  
TO BE WON!!!!**

**FILM CARDS**

ONLY £4 FOR 3 FILMS

ALLOWS ENTRY INTO ANY 3 S.U. FILMS.

CAN BE USED TO ALLOW ENTRY FOR GUESTS.

AVAILABLE FROM THE SOCIAL SECRETARY, THE S.U. SHOP & ON THE NIGHT OF THE FILMS.

**ENTS CARDS ONLY £20**

ALLOWS YOU AND A GUEST FREE ENTRY FOR THE YEAR INTO ANY JCC JUNIOR COMMON ROOM ENT AND ANY S.U. FILM.

ALSO GIVES DISCOUNTS INTO MAJOR ENTS.

ON SALE FROM THE SOCIAL SECRETARY IN THE S.U. BUILDING.

TERMLY CARDS AVAILABLE FOR ONLY £10 (PASSPORT PHOTO REQUIRED FOR ENTS CARDS)

NAME..... COLLEGE.....

- 1) WHAT'S YOUR FAVOURATE BAND?.....
- 2) WHAT'S YOUR WORST BAND?.....
- 3) WHAT'S YOUR FAVOURATE SINGLE?.....
- 4) WHAT'S YOUR FAVOURATE ALBUM?.....
- 5) WHAT'S THE BEST GIG YOU'VE BEEN TO (IF ANY)?.....
- 6) DO YOU PREFER LIVE MUSIC OR DISCOS?.....
- 7) HOW OFTEN WOULD YOU GO A GIG /DISCO BEFORE COMING HERE?.....
- 8) WHICH EVENT WOULD YOU MOST LIKE TO SEE IN LONDON AT THE MOMENT (EG BAND/STAGESHOW/NIGHT CLUB).....
- 9) DID YOU ENJOY INTRO WEEK?.....
- 10) WHAT WAS YOUR FAVOURATE INTRO WEEK ENT?.....
- 11) WHAT WAS YOUR WORST INTRO WEEK ENT?.....
- 12) HAVE YOU BOUGHT ANT ENTS CARD?.....
- 13) HAVE YOU BOUGHT A FILM CARD?.....
- 14) WHATS YOUR FAVOURATE FILM?.....
- 15) WHAT FILMS WOULD YOU LIKE TO SEE SHOWN AT UKC?.....
- 16) WHICH SOCIETIES HAVE YOU JOINED?.....
- 17) IS THERE A SOCIETY YOU WOULD LIKE FORMED AT UKC?.....
- 18) WHAT ARE YOUR FAVOURATE VIDEO/ARCADE GAMES?.....
- 19) WHATS YOUR FAVOURATE COLLEGE BAR?.....
- 20) WHATS YOUR FAVOURATE COLLEGE JCR?.....
- 21) WHAT SPORTS DO YOU PLAY?.....
- 22) DO YOU SMOKE, IF SO WHAT BRAND?.....
- 23) WHATS YOUR FAVOURATE TV PROGRAMMME?.....
- 24) HAVE YOU JOINED THE FAIR RENTS CAMPAIGN?.....
- 25) DO YOU OWN A COMPUTER, IF SO WHICH TYPE?.....
- 26) HAVE YOU BEEN INTO THE UNION BUILDING?.....

**PLEASE HAND IN TO THE JCC OR THE SU BUILDING**



**U.K.C.S.U.  
PROUDLY PRESENTS**

**THE FIRST YEAR BALL**

LIVE IN THE DINING HALL



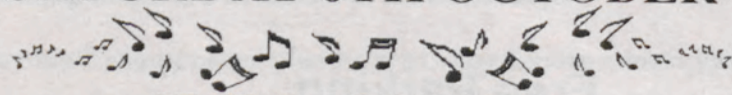
**THE MAN  
FROM  
DELMONTE**

AND  
*honeychile*

ALSO LIVE IN THE BAR/JCR

ALEXANDER AND ROBINSON JAZZ GUITAR DUO  
LOU DALGLEISH  
ROBERT REILLY

**IN ELIOT COLLEGE  
SATURDAY 6TH OCTOBER**



**£7 (IN ADVANCE)**

**£8(ON THE DOOR)**

DOORS OPEN 8.00PM EXTENSION TILL 1.00 AM  
COCKTAIL/WINE BAR IN JCR  
BAR EXTENSION

BUY AN ENTS CARD WHEN YOU BUY YOUR TICKET AND SAVE YOURSELF £2  
TICKETS AVAILABLE FROM THE S.U.SHOP AND THE SOCIAL SECRETARY

Hello,

Welcome to (or back to) UKC. I hope you all had a good summer break and are looking forward to a hectic first term. We've got loads of good gigs lined up for you including 'The High', 'five Thirty', 'Nine Below Zero' and 'Synergy featuring The Shamen'.

However just incase we've neglected anyones tastes we've compiled an entertainments questionnaire to find out exactly what everyboby likes, so we can do a better job for you. Each entry will be put into our prize draw where you can win one of two pairs of tickets to any major ent of your choice. Entries should be handed into the JCC or the S.U. building by the second Friday of term.

Kate Wilson  
(E.O. Ents)

**THE SENATORS**

(ACOUSTIC SET)

WEDNESDAY 10 OCTOBER

DARWIN JCR

£1.50 ON THE DOOR

**FREE WITH ENTS CARD!!**

**CRAFT FAIR**

**ELIOT JCR WEDS 3 OCTOBER**

SOUTH AMERICAN CLOTHES AND JEWELLERY, HOUSE PLANTS, CARDS, COMICS, ARTWORK, CANDLES, CRYSTALS, RECORDS AND MUCH MORE.

ALL IN AID OF THE SOUTH AFRICAN SCHOLARSHIP FUND

**RUFF RUFF & READY**



AN ENGAGING oddity on tape, latest Island signings **Ruff Ruff And Ready** are a far more serious proposition live. At **ULU** the obvious focal point was the two vocalists: both strong personalities in their own way but combined they're a forceful mix of melody and emotion.

As befits the music, their vocal style changes frequently, switching from rap to reggae drawl to straight tuneful crooning.

They fuse modern dance with ska, punk, funk, reggae and practically every other kind of music.

Lyrical, Ruff Ruff And Ready deal with social injustice with little or no mercy. Opinions and situations are presented so cleverly that there is no sense of preaching, though this added dimension ensures the music is more durable than just another collection of simple-empty-headed dance beats.

At a time when this nation's youth want to dance but are also concerned about what's going on around them, Ruff Ruff And Ready seem to be the perfect pop group for the job.

# INTRO WEEK 90/91

## THE COMEDY CLUB



The Comedy Club is a regular cabaret event which has built up a large following in the past year.

It is hosted by Alan Davies, an ex-student of U.K.C. and features new talent from the London comedy circuit guaranteed to keep you coming back for more.

	DARWIN	ELIOT	RUTHERFORD	KEYNES
SUN	THE BRONCHIAL DISORDERS + DISCO	DECADANCE	RUPERT AND THE JUMPERS	UKC RADIO DISCO
MON	DJCC DISCO	INTERNATIONAL RESQUE	UKC RADIO DISCO	MONKEY MESSIAH
TUES	COMEDY CLUB	MUSO SOC. EVENING	THE STAR CLUB	INDIE SUMMER DISCO
WEDS	RUFF RUFF + READY	UKC RADIO RAVE!!	RJCRC DISCO	RAG EXTRAVAGANZA
THURS	UKC RADIO DISCO	THE GREEN BAND PERFORMING A CEILIDH	GAME SHOW	CLUB DISCO
FRI	ORIGINS OF MUSIC FEATURING ENDA MCCABE	EJCC DISCO	THE FIREFLIES	DONKEY JIVE



Lovefest Local Band goes to Donkey Jive for trying to push back the barriers and introduce you lucky people to World Music, with a cross between African and Western rock.



### International Resque

If, as people are saying, the Inspiral Carpets are destined to fill the need in the market for a latter day Madness, then International Resque - stupid grin in all - are a twisted version of The Monkees looking for some classic songs. You can stand there and just see them running up and down the Thames Valley with surfboards over their heads.

They are boisterous fellas (fortunately tonight they keep their laddishness under wraps), trading on busy pop with a crazed catchiness. The songs like 'I'm Doing Fine' and 'I'm in Love With My Social Worker' are simple and upbeat and you can shake tambourines to them. The strobe-lighting was appalling, but then again not as shocking to look at as their tie-dye T-shirts. Funnily Gerry Anderson would have taken them out of the storyline.



### THE ORIGINS OF MUSIC

A NEW EVENT TO UKC. A REGULAR ACOUSTIC EVENING REATURING MUSIC FROM ALL ROUND THE WORLD. THE FIRST ONE FEATURES ENDA MCCABE A BRILLIANT IRISH FOLK MUSICIAN. FUTURE EVENINGS WILL FEATURE FOLK, BLUES, ROCK, JAZZ AND WORLD MUSIC. ALSO A FLOOR SPOT WHERE YOU CAN SHOW OFF YOUR OWNTALENTS.



MICHAELMAS TERM

### U.K.C.S.U. FILMS

ALL SCREENINGS IN CoLT 1 DOORS OPEN 7.00 p.m. FILM STARTS 7.30 p.m. ENTRY BY FILM CARDS OR ENTS CARDS ONLY

- OCT FRI 5<sup>TH</sup> FULL METAL JACKET
- SUN 7<sup>TH</sup> UNCLE BUCK
- MON 8<sup>TH</sup> } UNCLE BUCK
- FRI 12<sup>TH</sup> MOSQUITO COAST
- SUN 14<sup>TH</sup> } THREE MEN AND A BABY
- MON 15<sup>TH</sup> } THREE MEN AND A BABY
- FRI 19<sup>TH</sup> BIG
- SUN 21<sup>ST</sup> } TWINS
- MON 22<sup>ND</sup> } TWINS
- FRI 26<sup>TH</sup> PREDATOR
- SUN 28<sup>TH</sup> } INDIANA JONES AND THE
- MON 29<sup>TH</sup> } LAST CRUSADE
- NOV FRI 2<sup>ND</sup> GORILLAS IN THE MIST
- SUN 4<sup>TH</sup> } THE UNTOUCHABLES
- MON 5<sup>TH</sup> } THE UNTOUCHABLES
- FRI 9<sup>TH</sup> WILT
- SUN 11<sup>TH</sup> } DIE HARD
- MON 12<sup>TH</sup> } DIE HARD
- FRI 16<sup>TH</sup> U2: RATTLE AND HUM
- SUN 18<sup>TH</sup> } PARENTHOOD
- MON 19<sup>TH</sup> } PARENTHOOD
- FRI 23<sup>RD</sup> THE UNBEARABLE LIGHTNESS OF BEING
- SUN 25<sup>TH</sup> } NAKED GUN
- MON 26<sup>TH</sup> } NAKED GUN
- FRI 30<sup>TH</sup> INTERNAL AFFAIRS
- DEC SUN 2<sup>ND</sup> } ANGEL HEART
- MON 3<sup>RD</sup> } ANGEL HEART
- FRI 7<sup>TH</sup> ROBOCOP
- SUN 9<sup>TH</sup> } MOONSTRUCK
- MON 10<sup>TH</sup> } MOONSTRUCK

FILM CARDS AVAILABLE ON THE NIGHT

ALL SCREENINGS IN CoLT 1

DOORS OPEN 7 P.M. FILM STARTS 7.30 P.M.

### U.K.C.S.U. FILMS

FRIDAY 5<sup>TH</sup> OCT

## FULL METAL JACKET

Mathew Modine Adam Baldwin Vincent D'Onofrio Lee Ermye

Directed by Stanley Kubrick.

Stanley Kubrick ends a seven year cinematic silence with a brilliant, graphic portrait of two levels of hell on Earth. The first half deals with the mechanics and motivations of a marine corps training camp where young men are systematically de-humanised and refashioned as killing machines under a barrage of outrageously vulgar military vernacular. The film then embraces events surrounding the 1968 Tet Offensive and skirmishing in the devastated city of Hue, with all its idiocies and atrocities. It is concerned less with the politics of the war than with its dreadful inconsequence. A war out of control where objectives once dimly perceived have now become wholly lost.



SUNDAY 7<sup>TH</sup> OCT

MONDAY 8<sup>TH</sup> OCT

## UNCLE BUCK

JOHN CANDY STARS IN THIS COMEDY AS A ONE MAN WALKING DISSASTER AREA. SO WHEN HE IS LEFT BABYSITTING, THE FOLLOWING CATASTROPHIES MAKE FOR CONTINUOUS HUMOUR THROUGH OUT THE FILM.



ENTRY BY FILM CARDS OR ENTS CARDS ONLY  
FILM CARDS AVAILABLE ON THE NIGHT

# These days, no rebel needs to be without a cause.

Read the Observer and you'll find plenty.

The environment. The economy. The Health Service. Human rights. Inhuman bureaucracies.

Not to mention the Government of the day. (And they often wish we wouldn't.)

You'll also find a sense of style, a sense of humour and some very fine writing that helps to make sense of the week's happenings, both at home and abroad.

A perfect example of mind over what really matters.

Try it yourself this Sunday.

**OBSERVER**

A different set of values. A different kind of paper.