

# 2022 Returner Accommodation Application Guide - Canterbury

We have set aside a designated number of rooms across our campus for returning students.

## When can I apply?

Application pages to apply to live on the Canterbury campus again for the next academic year (starting in September 2022) will go live in mid-January 2022. Applications will remain open until there is no availability left (or the 30 June 2022 whichever is soonest).

You can [register your interest for returner accommodation online](#) before applications open in January. You can sign up for yourself or on behalf of a group and we'll make sure you are the first to know when applications go live.

All applications are sorted on a first come first served basis and room demand can be high, so please apply early to avoid disappointment. If you apply after our designated returning student accommodation is full you can request to be added to a waiting list.

## How do I apply?

You will need to apply through your [MyAccommodation portal](#) (which you used to apply in your first year). Don't worry if you have forgotten your login details, you can reset your password with your applicant ID number (which you can ask for in your nearest college reception with your KentOne card).

The process is the same as when you applied for accommodation in your first year. Just make sure you select the correct year (2022-23) that you want accommodation for when applying.



## What accommodation can I apply for and how will rooms be allocated?

We have a limited number of rooms across our campus accommodation for returning students in all areas (including en-suite rooms in Woolf College, Canterbury and Pier Quays, Medway) with the exception of Turing College which are reserved for first year students. Rooms will be allocated on a first-come, first-served basis so the earlier you apply the better as there is high demand for en-suite rooms especially.

[KMMS students can apply for KMMS accommodation in Park Wood.](#)

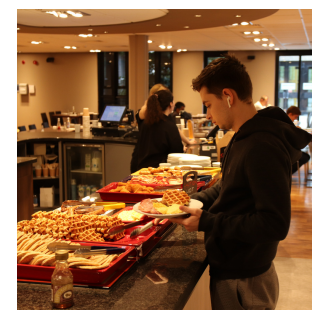
You can select up to four accommodation type preferences (3 minimum). You should only list accommodations that you would be happy to accept to ensure you are only allocated to a room you would want to live in. If you really want to live on campus, we would recommend including at least one non en-suite option within this and not choosing multiple rooms within one college area.

## Can I live with friends?

Yes, we will try to accommodate any requests to share with friends wherever possible. We're currently working on our application pages to make this as easy as possible. Once this has been completed more information will be added here, however when applying as a group you will need:

- To have the full name and student ID number of every member of your group as we will only allocate people together where all applications show they wish to live with the other.
- Your group will need to either fill an entire house/flat, or fill no more than 50% of the house/flat you are applying for. For example, a group of five friends could live in a Park Wood five bed House as they fill it, or a Keynes House as they only half fill it, but could not live in a six bed Park Wood House as this would be unfair to the final student living in the house.
- If there is a large group of you, you should apply early to allow us the best chance to keep you all together in your preference.

All of these guidelines must be met to allow us to fulfil requests to live with friends. Where requests don't meet the above, groups may be broken up.



## Am I guaranteed a room offer ?

We are guaranteeing a room offer to the first 1,000 applicants, after this you may still receive a room offer but we cannot guarantee it at this stage. All applicants must meet our eligibility criteria to receive an offer.

## Do I need to pay a deposit to secure my room?

We do not require a deposit to secure a room. All we ask is that in fairness to other students you don't apply unless you want to live on campus and cancel your application before being offered a room if you no longer require it. When you accept your offer the agreement will become binding.

## How much will it cost and what's included?

There are no application or deposit fees to apply for returning student accommodation. [Our 2022/23 accommodation prices](#) will be available online from mid-January 2022.

Included in your accommodation fees are all the energy bills (electricity, Wi-Fi, water and heating), personal contents insurance, [free Kent Sport membership](#) and your catering plan if you select a part-catered accommodation.

## When will I find out if my application is successful?

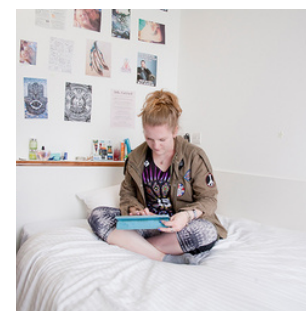
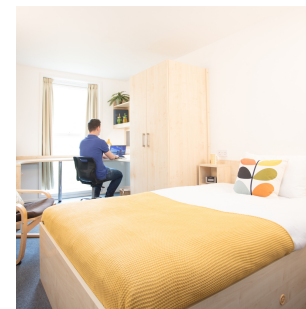
Your actual room allocation and detailed offers of accommodation will then be sent out from March 2022, but if you apply early you will also receive an email from the Accommodation Team before this date to let you know if your application has been successful.

## Can I change my preferences in my application after applying?

Yes, you can [log in to your application online](#) and update your room preferences until March when accommodation offers are being sent out.

## How do I accept my offer?

Once you have received your allocation (from March onwards) you will need to log into your [MyAccommodation portal](#) again and accept the offer within seven days of the offer being sent. You will then need to complete your accommodation e-induction before arriving.





## Will I be able to stay in my current room/leave belongings on campus over the summer?

Currently this would not be possible, however we have vacation accommodation set aside so that rooms are available on campus for those who need them, although you will need to move to a different room for the vacation period with your belongings. More information about [vacation accommodation](#) is available online.

## Can I cancel my application after applying?

You can cancel your application before accepting your accommodation offer.

Once you have accepted your accommodation offer this will become legally binding.

## I am a KMMS student. Do I need to apply differently?

KMMS students can also apply to return to live in Park Wood. As KMMS accommodation is offered on a different contract length to match your course dates, you will need to apply via a dedicated link which will be emailed to you by the Accommodation Office before applications go live in February. [Find out more on our KMMS accommodation webpage.](#)

## Do I need to be a postgraduate student to apply for Woolf College? Will postgraduate and undergraduate students be mixed?

You do not need to be a postgraduate student to apply for Woolf College as flats for both undergraduate and postgraduate students will be available. Each flat occupancy will be made up of all undergraduate or postgraduate students.

## Is there Medway returning student accommodation?

Yes, you can live in Pier Quays throughout your time at university. [See our Medway returning student accommodation information online.](#)

## I have a question that hasn't been answered here. Who should I ask?

If you have any other questions please get in touch with us in the Accommodation Office. You can call (01227 766660), email ([accomm@kent.ac.uk](mailto:accomm@kent.ac.uk)) or message us via [Twitter](#) or [Facebook](#).

