

# Our Ambitions

The Landscape and Biodiversity strategy outlines our commitment to environmental sustainability.

Our goal is for our campuses to be managed sustainably and that our outdoor spaces are enhanced for biodiversity, allowing nature to thrive.

**We want to protect biodiversity and provide opportunities for it to flourish and increase on our campuses.**

## Did you know?

The Canterbury campus is 300 acres and the Medway campus HMS Pembroke site is 7.5 acres!

## Main Themes & Targets

**To embed the Sustainable Development Goals (SDGs) in everything we do.**

Adjust our management techniques to help existing species flourish and encourage other species to return.

**Treat water as a valuable resource**

Using Xeriscaping techniques creates resilient landscapes that do not require supplementary water.

**Legal Protection**

Our Canterbury campus has pockets of designated ancient woodland and is home to a number of protected species including the Hedgehog and Great Crested Newt.

**Reductions in rodenticide and herbicide usage,**

instead preventing pests by maintaining healthy plants and quickly removing diseased specimens, and regularly monitoring and promoting beneficial insects.

**Encourage better connections between people and planet**

We are trialling the use of wilding principles on both the perimeter and central areas of campus.

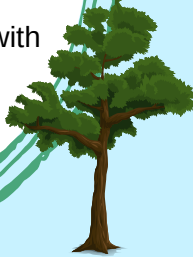
Our aim is to enhance our outdoor spaces, providing more opportunities to engage with the natural environment, and to make these spaces fully accessible.

We also want to create opportunities for more research/education opportunities including the use of our campuses as 'living labs', enhancing student experience and benefiting from student knowledge.

# Our Habitats and Commitments

## Woodlands and Trees

- Continue coppicing rotation and research more sustainable uses for wood
- Protect every tree and remove only when necessary and as a last resort
- Replace fallen/removed trees with two new trees
- Carry out new surveys



## Grassland

- Reduce mowing and increase the sward height where mowing continues
- Clear information available on signposts and websites
- Increase the acreage of our meadows



## Ponds

- Carry out water quality surveys
- Monitor and manage invasive species and biohazards
- Update habitat profiles where necessary
- Seek funding for restoration and management



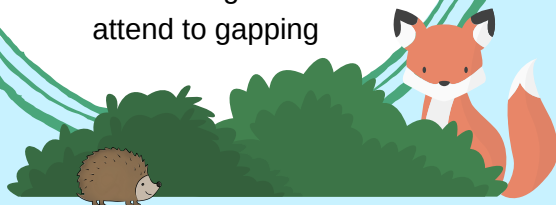
## Urban Wildlife

- Trial three different grassland management types on central campus
- Create a fully accessible Canterbury central campus trail that highlights key biodiversity and sustainable features
- Continue developing a multiuse green space for sustainability and wellbeing at the Medway campus



## Wildlife Corridors

- Introduce a new planting scheme that is high in value for pollinators, good for foraging and has aesthetic interest for people
- Improve movement and connectivity, ensure fences do not create barriers
- Maintain hedgerows and attend to gapping



## INTERESTING FACTS!

The Canterbury campus is home to several protected species including Hedgehogs, Great Crested Newts, Dunnocks, Starlings, Dormice and a diversity of bees, butterflies and fungi!

The Southeast of England is the most water stressed region of the UK which as a whole has less available fresh water per person than most other European countries.

