



# / GETTING STARTED PARIS /

2022 / Paris School of  
Arts and Culture

University of  
**Kent**

# CONTENTS

## **Before you arrive**

Four steps to register as a student	4
Visas and immigration	5
Accommodation	8
Plan a budget	12
Prepare for life in Paris	15
Travel to Paris and getting around	16
Prepare for your studies	17

## **After you arrive**

Welcome Week	21
Study in Paris	22
Enhance your degree	25

Key dates and contacts	28
Checklist	29



# WELCOME



**Welcome to the Paris School of Arts and Culture (PSAC). Our location in the cultural capital of Europe enables you to combine academic work with frequent study trips to the many resources that are unique to Paris, whether galleries, monuments or archives.**

Situated in the heart of Montparnasse, a part of Paris long associated with such figures as Picasso, Hemingway, Modigliani and Beckett, our home at Reid Hall has traditionally welcomed leading intellectual figures. Simone de Beauvoir, Jacques Derrida and Roland Barthes have all given talks here.

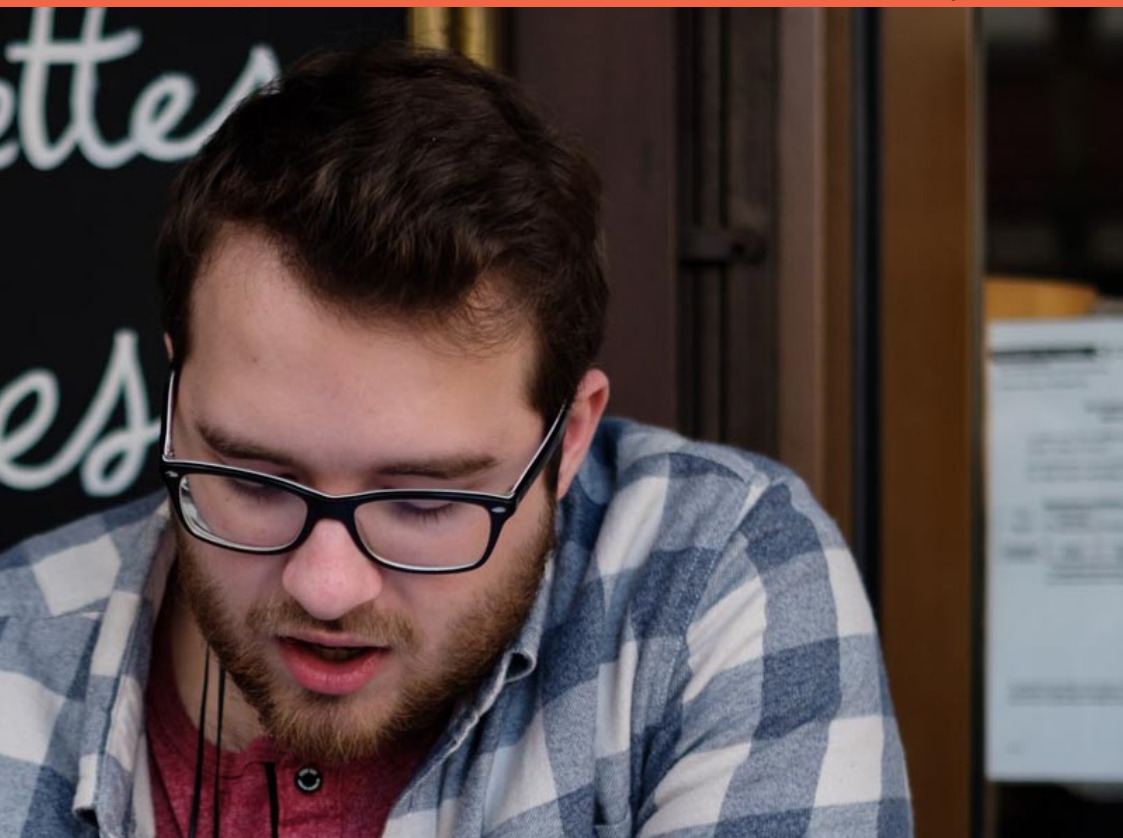
As well as its historical riches, Paris also has a living tradition of creativity in architecture, art, film and writing and we endeavour to connect you with existing networks that will release your own ideas and inspiration.

Ours is genuinely an international School with students coming from many different countries. We make a special effort to help you feel at home and this guide gives you the basics in terms of preparing, arriving and settling in as a student and as a resident of Paris.

We look forward to welcoming you personally when you arrive.

**Paris School of Arts and Culture team**





## / BEFORE YOU ARRIVE

Once you receive confirmation of your place at Kent, you can start preparing for student life. From registering as a student to checking out the local area, the following pages are a guide to what you can do before you arrive.

An important priority is the process of registering as a student (see p4). Some students need to apply for a visa (see p5) – a process that should be started as soon as possible. Another good tip is to investigate what accommodation is available (see p8) in relation to your budget. This will make the process easier once you arrive.

University of Kent Paris School administrators will help you through this process.

# FOUR STEPS TO REGISTER AS A STUDENT

**Once you've met your offer requirements, you need to complete enrolment. Before you arrive, you will need to decide how you will fund your studies and arrange your fee payments. These four steps will guide you.**

## Step one: Wait for your 'How to Enrol' email

We'll let you know when you can begin the enrolment process. Look out for this email in your applicant portal in-tray. If you have been made a conditional offer of a place, you will need to meet any offer conditions before you enrol. Please email the Admissions Officer at [paris@kent.ac.uk](mailto:paris@kent.ac.uk) if you are unsure about any of your offer conditions.

## Step two: Complete enrolment online

The enrolment process should take no more than ten minutes and is simply confirmation of your details and provision of information we require in order to register you as a student.

As part of the enrolment process, you will be asked to upload a passport-style photograph.

### Your photograph MUST:

- be in colour
- be head and shoulders only
- be on a white background
- not include any filters
- show your whole head (do not crop).

Please ensure your photograph is clear as it will be on your KentOne (student ID) card for the duration of your studies at Kent.

## Step three: We will register you remotely

We will proceed with your remote registration once you have successfully enrolled online. You will receive a confirmation email once this is complete. The email will also advise you how to activate your Kent IT account. This gives you an email address and allows you to access the University's intranet and library resources.

## Step four: payment of fees

Full details of how to pay your fees can be found in the Paris Student Finance handbook at: [kent.ac.uk/brussels/handbook/parisfinance.pdf](http://kent.ac.uk/brussels/handbook/parisfinance.pdf)

All tuition fees are to be paid in full before the start of each academic year, unless different payment terms have been agreed with the University. Full details of tuition fee amounts are published online. The handbook contains details of payment options, the early fee payment discount and deferred payment options.

Kent discounts are available if you meet specific eligibility requirements. Information on loyalty discounts can be found here: [kent.ac.uk/finance-student/fees/loyaltydiscount.html](http://kent.ac.uk/finance-student/fees/loyaltydiscount.html)



# VISAS AND IMMIGRATION

## Applying for a visa

If you are not an EU national, or you do not hold leave to remain in France, you will need a student visa before coming to France. Putting together your visa application may seem daunting at first, but the good news is that the application itself is relatively straightforward.

Please note visa applications cannot be submitted more than three months prior to the start of your arrival in France. If your programme begins in mid-September, you should aim to begin your application in early June. If your programme begins in mid-January, you should aim to begin your application in early October.

Once you have accepted your offer of a place, the Paris Office will automatically send you a visa support letter drafted in French.

## Register with Campus France if required

The French Higher Education Ministry requires the residents of most non-EU countries to obtain pre-authorisation before submitting their student visa application. Countries affected by this separate Campus France procedure (in French: procédure Études en France) can be found here: [www.campusfrance.org/en/application-etudes-en-france-procedure](http://www.campusfrance.org/en/application-etudes-en-france-procedure).

Campus France assesses the validity of your educational credentials and also your genuine interest in pursuing a degree programme located in France.

You create an account and upload copies of your transcripts and degrees earned, at which point Campus France will provide clearance for you to move forward with your visa application. Please note that there is a fee of roughly 100€ for this service. Please keep the receipt for your Campus France fee as you will need to produce it later when you formally apply for your visa with the French consulate. If you are required to register with Campus France, the Kent Paris Office will send you separate instructions on how to complete the registration process.

## Types of visa

There are two categories of student visa: short-term visas, available for stays of 90 days and under, and long-term visas, for periods of 90 days or more. If you are applying for one of our year-long programmes in France, you will apply for a long-stay (sometimes called an extended stay) student visa.

Please note that UK nationals who do not hold what is known as a 'UK Withdrawal Agreement from the European Union' residence permit will be required to apply for a student visa.

## Apply for your visa online

The French Government introduced a new online visa application service in April 2021. Anyone applying for a French student visa will first register through the France-Visas portal, accessible here: [france-visas.gouv.fr/en\\_US/web/france-visas/](http://france-visas.gouv.fr/en_US/web/france-visas/)

After registering for your visa, your visa application will be despatched to the local French consulate serving your jurisdiction. Please remember to apply for your visa in good time; applying too late might mean that you will not have your visa in time for the beginning of your programme.

## Documents you will need

The consulate will expect you to submit an application and provide copies of your passport, Campus France clearance (if relevant) and proof of travel to France (airline ticket, etc).

## Demonstrating your income

You will be required to prove that you have sufficient financial resources for your year in France. Please follow the instructions indicated in the visa portal.

## VISAS AND IMMIGRATION (CONT)



In most cases, you are required to demonstrate that you have in your home bank account the equivalent (in your home currency) of 615€ multiplied by the number of months you will be in France. You are not required to open a French bank account for the purposes of applying for a visa.

Consulates will accept your own bank statement, or the bank statement of a guarantor (such as a parent), as long as the bank statement is accompanied by a notarised declaration indicating that your guarantor will financially support you during your time in France. If you have been awarded a scholarship, proof of your award can be used as proof of sufficient financial resources.

### Proof of accommodation

You will also be required to demonstrate that you have booked accommodation for at least the first month of your stay in France. In the past, students have made refundable bookings through *trusted* sources such as Airbnb or Booking.com to meet this requirement.

### Good to know

The application fee is set at 99€ or its equivalent in your local currency. Within three months of your arrival in France, it is compulsory to validate your visa online with the French government at <https://administration-etrangers-en-france.interieur.gouv.fr/particuliers/#/>

You will also be asked for your new address in France. There is more information about this in the After you arrive section of this guide (see p21).

Please note that extended-stay student visas cannot be combined with what is commonly known as a 'tourist visa'. A tourist visa allows foreign nationals to spend up to three months in France without applying for a physical visa. However, because you cannot combine an extended-stay student visa with a tourist visa, you cannot 'add on' an additional three months to the start or end date of your student visa.

SOCIETE  
GENERALE

CAFE DE LA DANQUE  
RESTAURANT



# ACCOMMODATION

**All students studying an MA programme in Paris are responsible for finding their own accommodation. The University's Paris Office staff are available for advice on how to get started.**

Expect to spend time looking for accommodation in Paris, but do not look too early as rental properties are unlikely to be available far in advance. Your search will yield the best results the closer you are to your arrival in Paris, except for student residence halls, for which early applications are more likely to be successful.

## Types of accommodation

In the past, Paris students have elected to live in flats or flat-shares (organised independently or through an agency), in student halls, or with host families. There is strong competition for budget-friendly student halls but, occasionally, spaces become available at the last minute, so we do recommend enquiring. The University can provide a status letter if you require proof of your future student status (see p21).

Finding accommodation that suits your tastes and budget will take a bit of effort. Expect to invest a certain amount of time in your flat search, and then reap the benefits once you've found your new Parisian home.

Each neighbourhood has a different identity – if you have any specific questions please feel free to get in touch with staff from the Paris Office.

Do not expect the same customs and rules to apply to renting accommodation in France as in your home country. If you are unsure of something, please get in touch with the Paris Office staff, who will advise you.

## Renting privately

The majority of our students choose to rent privately, typically studios or one- or two-bedroom flats. Rent varies depending on size and location. Private apartments can be secured through rental agencies, classified ads or word of mouth.

It is common practice for rental agencies to charge the equivalent of one month's rent in agency fees. Please note that this is only payable once an agency secures something for you – never in advance. Similarly, if you organise accommodation through someone independently, never pay up-front until you have seen the accommodation and have a rental contract. If you do decide to use an agency, look for small agencies as their fees are typically lower.

It is standard practice for landlords to require a deposit that is the equivalent of one month's rent. This will be returned to you at the end of your rental agreement, providing there is no damage to

the property. Flats to let can be furnished or unfurnished – furnished flats are usually more expensive. It is always advisable to ask what is included in the rent.

You may be asked for a guarantor. Guarantors are legally required to cover rent in the case of a renter not meeting their payments. Some landlords will accept foreign guarantors, while others will accept only France-based guarantors.

If you do not have a guarantor, you might be able to apply for a 'garantie visale'. This is a free service offered by the French government to students and young workers under 30 years old. It is valid for rentals using a 'bail mobilité', a lease for a furnished flat with a duration of up to one year. You must apply before signing your lease. You can apply via the programme's website (currently in French only): [www.visale.fr](http://www.visale.fr)

As Paris is a large city, it is not common for students to live close to their universities. While you are certainly welcome to look for accommodation around PSAC, our students typically live all over the city and use public transport, which is very reliable and very good value for money. However, you should always take your security into account when considering the available options.

### Renter's insurance

Renter's insurance is mandatory in France for most rental agreements, and landlords will probably ask for proof that you have it. If you decide to open a bank account in France, such insurance can be provided by your bank for a small monthly fee. See p21 for how to open a bank account.

### Making contact with accommodation providers

If you're not a French speaker, you might find the expat community accommodation listings easier to navigate, as they are in English. Rental agencies are very competent but, while some of them are likely to speak English, they might not be able to explain all the differences between renting a flat in Paris and renting a flat in your home country.

Dealing with an agency should be an option to consider if you do not have any luck with word-of-mouth referrals or by going through the expat community classified adverts. September is when students arrive in Paris so there will be a reasonable amount of accommodation available but be aware that there will also be strong demand from other students.

### Useful links

#### parisattitude.com

An English-speaking rental agency that specialises in furnished apartments. Used by a number of University of Kent students in past years; rental agency fees.



#### perfectlyparis.com

Run by a friendly Canadian based in Paris, since 2001 this agency has specialised in furnished apartments in Montmartre and north-western Paris. They also have properties in other areas as well as options not listed online, so feel free to email them to check availability.

#### ads.fusac.fr/ad-category/housing

An anglophone website used by a number of University of Kent students, where individuals can list their apartments for rent – often the listings are in English.

#### lodgis.com/en/

Lodgis is a searchable online platform like Airbnb for longer-term accommodation. Lodgis has a large bilingual staff, but do be mindful of any agency fees before signing on the dotted line.

#### fac-paris.com/faq/

France Accommodation and Culture offers homestays and single-occupancy rentals for minimum stays of three months. This agency is able to provide a visa letter in advance for students requiring proof of accommodation in order to obtain their visa.

#### pap.fr and leboincoin.fr

Classified adverts on these French-language websites; be wary of scams.

#### airbnb.com

Short-term (up to three months) accommodation. Past students have arranged to stay in certain residences for up to three months.

#### Facebook groups

Former students recommend joining accommodation-focused Facebook groups as a great way to get in touch with landlords or potential flatmates.

# ACCOMMODATION (CONT)

## Additional reputable resources:

- [centralparisrentals.com/](http://centralparisrentals.com/)
- [en-fr.roomlala.com/](http://en-fr.roomlala.com/)
- [studelites.com/en/paris/consul-paris-14-paris.html](http://studelites.com/en/paris/consul-paris-14-paris.html)
- [spotahome.com/](http://spotahome.com/)
- [Paris-housing.com](http://Paris-housing.com)

## Student residences

You should also investigate student halls, though there is usually strong competition for places. If you do not receive a response initially, politely insist by writing again or contacting them by telephone. These are usually the cheapest options for accommodation, with rent close to 400–500€ per month on average.

The sooner your application is submitted, the better your chances are of securing a room in student accommodation.

The Cité Universitaire is ideal for postgraduate students and includes many amenities you would expect to find on a university campus.

- **Cité Universit  ** (14th arrondissement)  
[www.ciup.fr/en/houses/applying-for-housing](http://www.ciup.fr/en/houses/applying-for-housing)
- **Estudines** (various locations in Paris) [estudines.com](http://estudines.com)
- [fie.fr/en/](http://fie.fr/en/) (for women only)
- [foyeralma-bosquet.com/#!](http://foyeralma-bosquet.com/#!) (for women aged 18–25 years only).

## Specialist student accommodation

Accommodation is also available for students who meet certain requirements. For example, the Irish Cultural Centre (CCI) located in the Latin Quarter will accept applications from students who meet its eligibility requirements: professional artists, teachers or Irish students. Please direct any eligibility questions to the Irish Cultural Centre:  
[centreculturelirlandais.com/en/stay/eligibilite/](http://centreculturelirlandais.com/en/stay/eligibilite/)

## Host families

Students looking to make a strong connection with local culture or to speak French should consider living with a host family. The following organisation is reputable and has been recommended by former Kent students in Paris:  
[hostfamiliesinparis.org/en/index.php](http://hostfamiliesinparis.org/en/index.php).

Students can also choose their own host family experience on a reputable online platform, France Stay: [students-francestay.com](http://students-francestay.com).

## Top tips for finding accommodation

- Paris is still a paper-based culture: noticeboards in universities, caf  s, student halls, religious organisations (like the American Church), and English-language bookshops are also worth a look.
- Use past Paris-based students or any local contacts as resources.
- Unfortunately, scamming can be quite common. ALWAYS view a flat and get a rental contract before sending money to anyone unless you are booking through a reputable service.
- Landlords sometimes ask for a complete rental dossier, which should include photocopies of your ID and your guarantor's ID, in addition to proof of your guarantor's income. It is perfectly legal to request this information in advance. Some rental agencies will only accept a guarantor who pays taxes in France – this practice is also legal.
- Giving notice to end a tenancy is done in writing through registered post only:
  - if the flat is unfurnished, three months in advance of your departure
  - if the flat is furnished, one month in advance of your expected departure.



# PLAN A BUDGET

**The cost of living in Paris can vary greatly depending on the type of accommodation you choose and your lifestyle. Our estimates are based upon a student living modestly in one of Paris's 20 arrondissements.**

## Ensure you have sufficient funds

Please ensure that you have sufficient funds to cover both your tuition fees and your monthly living costs. Some students choose to work and study at the same time, but the hours you can legally work may be restricted by your visa.

Students from outside the EU are not permitted to work more than 60% of the legal work week (which is 35 hours in France), or a total of 964 hours per year.

## Living expenses

### Accommodation

Expect to pay between €400 and 1,200€ per month. The cheapest accommodation in Paris usually starts at around 400€ per month in student residences. Flat-sharing typically costs between 500 and 700€, and a furnished studio of about 30m<sup>2</sup> will cost around 1,000€ per month (this accommodation is typically found by word of mouth).



### Food and drink

Budget for 300€ and upwards per month. You can keep costs down if you cook for yourself, but there are lots of good-value meals to be had in Paris.

### Study materials

Allow 5€ per month for any photocopying or printing you may wish to do. Core course materials are always available for consultation in local libraries, though you may wish to purchase your own books.

### Public transport

You should budget for 75€ per month. The Forfait Navigo is a travel card that permits unlimited travel on all Paris/regional transport links (metro, bus, tram, and commuter trains). This includes travel to/from Charles de Gaulle Airport and to popular destinations such as the Château de Versailles. If you are under 26, you are eligible for discounts (see p16).

More information about planning your travel to France can be found on p16.

## Health insurance

Health care in France is very affordable and accessible to everyone, irrespective of wealth, national origin or other social situations.

## EU nationals

If you are a European Union national you should order your European Health Insurance Card (EHIC) and have it sent to your home address. This can be ordered from your national health service.

Present this card at all consultations. In most cases you will be expected to pay a small percentage of your overall bill; the rest of the bill will be charged to your national insurance.

## Non-EU nationals

As a visa holder, you will be eligible to enrol in the national health care insurance scheme, the Assurance Maladie. This will enable you to access health care at very affordable prices in the same manner as other French/EU nationals. For this reason, it is important that you register your visa correctly within three months of arriving in France.

The Paris Office will lead a session during Welcome Week on how to register for the Assurance Maladie as well as how to access appropriate healthcare practitioners in Paris.

## What to spend on health insurance

The amount you spend on health insurance depends on the plan you sign up for. A standard GP visit in France costs 25€, the cost of which would normally be reimbursed through your insurance scheme.

## Regular medication

If you take regular medication, we advise you to bring a supply with you.

*“The arts are valued in Paris in a way that I haven’t experienced anywhere else, and it was extremely comforting and validating to be around people who value the kind of work I want to do.”*

**Rebecca Barnstien**  
Creative Writing





# PREPARE FOR LIFE IN PARIS

## Pre-departure networking

**In addition to the information below, prior to your arrival in France, the Paris Office will ensure that you have the opportunity to network with your fellow students.**

The Kent Paris Office leads online information sessions over the course of the summer for students joining in September and over the autumn for students joining in January. You will receive invitations to these sessions via the email you used to apply. In these sessions, you will hear directly from Kent staff and current PSAC students.

### Find us on social media:

- [facebook.com/UniKentParis](https://facebook.com/UniKentParis)
- [twitter.com/UniKentParis](https://twitter.com/UniKentParis)
- [instagram.com/uni\\_kentparis](https://instagram.com/uni_kentparis)

## Student discount cards

You may wish to purchase student discount cards such as ISIC (International Student Identity Card) or the European Youth Card. These are available at STA Travel offices before you leave, or can be obtained once you arrive in France.

## Students with disabilities

The Student Support and Wellbeing Service (based at the Canterbury campus) co-ordinates support and guidance for students with disabilities.



If you have a disability for which you require support, please make sure to register with Student Support before you arrive in Paris. See the Student Support page for more information: [kent.ac.uk/student-support](https://kent.ac.uk/student-support)

## Learning the language

In preparation for your time in Paris, you may want to start learning French, or to brush up former skills. While it is possible to get by in Paris with minimal French, learning the language will help you to settle in and immerse yourself in French culture. If you want to start learning French before you arrive at the University, there are many providers such as Berlitz, Alliance Française or Institut Français that offer excellent and comprehensive courses.

Some students decide to attend regular language exchanges across the city in order to meet people and practise their French.

We will let you know about these opportunities in Welcome Week. Some options are:

- American Church in Paris: [acparis.org/faq-contact-us](https://acparis.org/faq-contact-us)
- le Cercle International de l'ARC (very cheap): [www.arc-cercle-international.com](https://www.arc-cercle-international.com)
- WICE (very cheap): [wice-paris.org](https://wice-paris.org)
- BlaBla Language Exchange (social language exchange events): [blablalanguageexchange.com/eventsblabla](https://blablalanguageexchange.com/eventsblabla)

## Mobile phones

If you plan to bring a phone to France, it is essential that you have it unlocked by your provider before you arrive. There are several phone plans (including pay-as-you-go) available in France from multiple carriers. Further practical information on living in Paris, from navigating the city to health and wellbeing, will be provided during Welcome Week. (see p21).

# TRAVEL TO PARIS AND GETTING AROUND

**Before travelling to France, check your home country's travel advice pages and ensure that you have subscribed to updates so that you receive any important changes to travel advice.**

## By air

The nearest major airports to our Paris centre, Reid Hall, are Charles de Gaulle (CDG) and Orly (ORY), both with excellent transport links to central Paris.

The RER B train line connects Charles de Gaulle to most of Paris for €10, while taxis will charge a flat fee of €53 to the right bank, and €58 to the left bank. Orly has connections via shuttle bus and the RER C train line, while taxis will charge €32 to the left bank, and €37 to the right bank.

## By rail

The largest railway station in Paris is Gare du Nord, where the Eurostar arrives from London and from which you can access Reid Hall by metro (see below). The closest commuter railway station to Reid Hall is Port-Royal, which is on the RER B line and links directly to Charles de Gaulle airport and Gare du Nord.

## By metro

Reid Hall is close to the Vavin metro station on line 4. If you are coming from the Gare du Nord, take line 4 (magenta) in the direction of Mairie de Montrouge. It takes about 30 minutes to get to Reid Hall with no changes.

## Public transport

The Paris metro system is an excellent way to get around the city. Across 14 lines, with stops every few minutes, the network covers the city very well.

The RER, the regional train system, runs across central Paris and takes people in and out from the suburbs, including to Charles de Gaulle airport and Disneyland.

The bus network is also extensive and a useful way to get around Paris. You can get a Navigo Pass for €75 per month, which gives you unlimited journeys across the whole network, including buses, metro, RER and trams. See: [navigo.fr/](http://navigo.fr/)

If you are under 26, you are eligible for the Forfait Imagine R Etudiant, which is €350\* for the whole year. You need to apply for this by post after you arrive: [iledefrance-mobilites.fr/titres-et-tarifs/detail/forfait-imagine-r-etudiantpresentation](http://iledefrance-mobilites.fr/titres-et-tarifs/detail/forfait-imagine-r-etudiantpresentation)

We recommend using an app such as [www.citymapper.com/paris](http://www.citymapper.com/paris) to plan your journey in real time.

## Vélib: Bike hire system

Paris was the first city in the world to introduce a bike hire system. You can pay significantly reduced rates for a year-long membership. There are stations all over the city, including right outside Reid Hall, and the bikes are in generally good condition.

Electric bicycles are available as well. This is a great, cheap way to get around the city and to get to know it: [velib-metropole.fr/en](http://velib-metropole.fr/en).



# PREPARE FOR YOUR STUDIES



## Module selection

After your enrolment and registration are complete, you will register for your modules via the Kent Vision student portal. A list of modules delivered at our Paris Centre can be found here: [kent.ac.uk/courses/modules?collection=P](http://kent.ac.uk/courses/modules?collection=P).

Contact the Kent Paris office if you are unsure about how to register for your modules.

## Academic planning

The academic structure of your MA is similar to that of most MA programmes offered in the United Kingdom and has been approved by the relevant accreditation bodies; however, it may be different from the system in which you studied as an undergraduate student.

We will deliver a session on degree structure and progression during Welcome Week.

## Academic terms

Your MA is divided into three terms. Both the autumn and spring terms are teaching terms, and you will meet regularly with your tutors. The autumn term begins in late September, and the spring term begins in January. The third term is designed for you to write up your dissertation or dissertation project, which you will submit at the end of August.

If you begin your MA programme in January, you will have teaching in the spring term, followed by the summer term, where you have the opportunity to start thinking about your dissertation, or undertake an internship or work experience. You will then have teaching in the autumn term, and work on your dissertation in the following spring term.

You are welcome to travel during the summer term, but you should remember to schedule supervision sessions with your dissertation supervisor during this time.





## / AFTER YOU ARRIVE

Arriving in Paris is always an exciting time for new students. The following pages guide you through the process of settling in and help to ensure that your studies go smoothly from the day you arrive.

The first few weeks after arrival are usually very busy. Some of the most important aspects of life as a student are covered in the following pages, such as Welcome Week, information about Reid Hall, study resources and some of the highlights you can expect while you're here.



# WELCOME WEEK

**When you arrive in Paris, your year will begin with a week of orientation workshops, presentations and visits, and you will be formally inducted into the University community.**

Throughout the week, your days will consist of a mix of scheduled activities and free time to settle in. On the first day you will be welcomed by the Paris team and over the following week you will attend presentations about your degree course structure, student support, research resources, living in Paris, adapting to French culture, careers workshops, the Paris MA festival and *The Menteur* literary magazine.

Other activities include a guided tour of Reid Hall, library inductions and a cultural visit. There will be opportunities to socialise with your fellow students too. Please refer to the post-arrival checklist below for important administrative tasks you need to complete. The Paris Office staff will be available during office hours to assist with these, and any other queries you may have.

## Post-arrival checklist

**Make sure you take care of the most pressing tasks first.**

### ID check

The University needs to verify that you are who you say you are. During Welcome Week, Kent staff will verify your ID (passport or national ID card). The University reserves the right to cancel an offer of a place to any student who does not provide

evidence of their identity. Please contact the Paris Office if you think you may have difficulty meeting this requirement.

### French visa holders

Make sure that the immigration officer at the port of entry stamps your passport with your date of entry into France (or into the Schengen zone). Within three months of your arrival in France, it is compulsory to validate your visa online with the French government: <https://administration-etrangers-en-france.interieur.gouv.fr/particuliers/#/> You will also be asked for your new address in France. Please ask the Paris Office staff if you have any further questions on this.

### Opening a bank account

If you wish to open a French bank account, we will provide you with a contact at a reputable bank during Welcome Week. A number of Kent students do find this useful as banks generally provide affordable insurance offers (such as renter's insurance). Some students have also used Britline, a British-friendly banking service provided by a national French bank (Crédit Agricole): [www.britline.com](http://www.britline.com). Please note that most of their services are offered online. In the meantime, you may also find it useful to organise an alternative solution like Revolut ([revolut.com/](http://revolut.com/)) before your move to Paris, to use while you are initially settling in and waiting for your French account to open. Bear in mind that your normal bank card from your home country may incur fees when using it abroad

and it is always handy to have a second card with you in case of loss or theft. With Revolut, you can upload money via their mobile app in your own currency, convert it to euros at the market rate, before taking cash out or paying for items in Paris. You receive a virtual and physical card to use as well as an IBAN and UK current account (if necessary).

### Insurance

Renter's insurance is compulsory in France whether you rent a flat through an agency or privately. In addition to renter's insurance, civil liability insurance (assurance de responsabilité civile) is also compulsory in France. Fortunately, cheap options are available (a few euros per month). One of the simplest ways to sign up for either or both is by enquiring with your bank. Some banks will package them together into one rate. Explain that you are a student and require one of their basic options. Kent staff will provide further guidance on this during Welcome Week.

### Status letters

Contact the Paris Office to obtain an official status letter from the University to indicate that you are a registered student at the University of Kent. We generally require approximately 48 hours to process status letters, and please indicate if the letter should be in English or in French.

**You will need a status letter to open a bank account. Automatic status letters are also available through the Kent Vision student portal.**

# STUDY IN PARIS

## Reid Hall

Located in the heart of the bustling Montparnasse district where Picasso and Modigliani opened their studios, Reid Hall is located close to the now-celebrated cafés where the intellectual elites of Paris once held court. It is also just a short walk from the stunning Jardin du Luxembourg, an expansive, classically designed park, much frequented by students from the nearby Sorbonne and other Latin Quarter institutions.

Originally an 18th-century porcelain factory, Reid Hall was transformed into a teaching centre for international students in the early 20th century, beginning life as a residence and studio space for young female artists and students. Reid Hall is now home to more than a dozen study abroad programmes, welcoming more than 800 students per year.

The University of Kent Paris School of Arts and Culture has the biggest graduate programme and is the only British university on the site.

The charming traditional buildings are grouped around two leafy inner courtyards; they include two large conference rooms, which are host to a wide range of humanities-based events with broad appeal, and a beautiful reading room.

Reid Hall has thus been part of the cultural fabric of Montparnasse for over 100 years, an anglophone hub for the humanities.

Authors and philosophers such as Barthes, de Beauvoir and Derrida have lectured here, and today Reid Hall is a global research and study centre shared between partner institutions that have developed a vibrant scholarly community for expatriates.

## Normal opening hours

**Reid Hall** is open from Monday to Saturday, 08.00 – 22.00 and Sunday 08.00 – 16.30. It is closed on French bank holidays and two weeks in August.

**The Paris Office** is open from 10.00 until 17.00, with some exceptions in case of external University business.

## Timetables

Module selection takes place over the summer, and you will receive your autumn term timetable in late August.

## Study resources

As a PSAC student, one of the world's most cosmopolitan cities becomes both your classroom and your campus. Kent academics have designed modules that link theory to real applications and use Paris's unmatched range of museums, art exhibitions, archives, cinemas and architectural riches to illuminate advanced interdisciplinary study.

Study trips vary by discipline, but past trips have included the Château de Versailles, the Paris Picasso Museum, UNESCO

headquarters, visits to Paris's most renowned cinema houses and, of course, the city's unrivalled art collections, such as those found in the Louvre, Musée d'Orsay and the Centre Pompidou.

Studying in Paris means that you can return to these significant institutions and collections as often as you like as you progress in your studies.

## Specialist library facilities

Our interdisciplinary programmes are designed for you to engage academically with Paris, and you have full access to English and French-language study centres, such as the American Library in Paris, and the Bibliothèque nationale de France.

Depending on your course of study, the University will also organise your membership for specialist libraries, such as the Cinémathèque française, which has one of the finest collections of films and film-related documentation in the world.

Kent's full range of electronic library resources is also available as a complement to physical collections, and our students have a dedicated librarian to assist them in finding resources across all these libraries.

## Study spaces

As well as the study spaces found in the libraries, there is also an extensive network of libraries across the city that is open to the public and to students.

We have a comprehensive guide available to students to aid you in finding your preferred study space. Furthermore, it is a cultural norm in Paris to study in any café, restaurant or park, or on the riverbank, and this can be a great option for students.

## Accessing your student record

Your online student record is an invaluable resource that you should become familiar with as soon as you can. You can access your details, modules and other elements of your records online, as well as monitor deadlines and keep track of any tasks that you are required to complete.

## Moodle

Moodle is a virtual learning environment where your module outlines and readings are held. Once you have completed your registration, you automatically have access to your modules on Moodle.

There is also a page for administration documents and information. It is important to check that you have access to the correct modules on Moodle since it is used to submit your essays, and is where you will find reading lists and study trip information. Moodle can be accessed from the Student Guide: [kent.ac.uk/student](http://kent.ac.uk/student)



## Covid-19 protocols and safety

The health and wellbeing of our students, staff and local communities is our top priority. We carefully monitor the latest Covid-19 health and safety protocols in France and adapt our teaching accordingly. We are committed to maintaining Kent's excellent teaching, research and student experience despite the impact of Covid-19.

Our programmes of study have been taught in a blended way, which includes in-person teaching and occasional online provision in compliance with current government regulations.

All our facilities, including teaching and study spaces, have been prepared to support social distancing and we are actively promoting Covid-safe behaviours in accordance with government guidelines.

During Welcome Week students are provided with our Covid-19 Code of Conduct, which you are expected to read and abide by. We have clear procedures for any students or staff members exhibiting Covid-19 symptoms and for students needing to self-isolate, we have a package of support available. We also provide students with information on how and where to have a Covid-19 test, local Covid-19 contact details and other relevant information to keep you safe.



# ENHANCE YOUR DEGREE

**Our aim is to create a dynamic postgraduate community that gives students the opportunity to develop their understanding, not just of their own subject area, but across the humanities.**

We encourage interdisciplinary collaboration through the MA festival and the production of our magazine, *The Menteur*. Speakers' series and other events throughout the autumn and spring terms bring students into contact with leading academics and professionals across the humanities.

We also collaborate closely with other Paris-based English-speaking university programmes through these events, sharing our networks and expertise for a more enriching experience for all our students.

## Paris Postgraduate Festival

The Festival is an annual event run by students that includes a range of cultural events held during the first week of June. It is the chance for PSAC students to connect with other academic communities in Paris and Canterbury as well as the arts community. Events are developed around a specific theme such as Escapism, Revolutions, Dangerous Ideas and Unite | Rebel.

Past festival programmes have included a film screenings in the presence of directors, a literary hike across the city, student-curated art exhibitions, and a panel discussion with drag performers.

## The Menteur

*The Menteur* is a literary magazine, written and produced by our students. It was launched in 2012 by a group of MA students during their time studying at PSAC. Now in its ninth year, it offers students the chance to work on and produce a magazine of their own – both an exciting and a demanding challenge.

The magazine publishes student work, including poetry, short fiction, photography and illustrations, as well as interviews with established artists, comment pieces and features.

The content and the theme of the magazine are decided by the editorial team, which makes each issue a unique reflection of the ideas and passions of those involved. Students cover roles from editorial and design to layout and marketing, allowing them to gain experience of the various processes involved in producing a magazine.

Past issues of *The Menteur* can be found by visiting [issuu.com/thementeur](http://issuu.com/thementeur)

## Events and seminar series

A variety of events and seminars are organised by the Paris School over the course of the year. These are sometimes single events or can be part of a series such as 'Creative Writing Reading' or 'Politics of Translation – Translation of Cultures'.

These are often co-sponsored by Kent, Columbia University Global Centers, University of London Institute in Paris and the American University in Paris and will be announced at the start of the academic year.

*"Working on The Menteur with such a talented international team was incredible. I had done a little bit of journalism before, but to produce a magazine from nothing was very rewarding. To be encouraged to work on such an independent project was a fantastic opportunity."*

**Martina Gannon**  
Former Assistant Editor-in-Chief

## ENHANCE YOUR DEGREE (CONT)



### Careers advice

In Paris, we work with you to enhance your employability, through specialised workshops and networking opportunities with creative professionals based in Paris.

We also recommend that you take advantage of the expertise and knowledge available from our Careers and Employability Service. For more information on the careers help we provide at Kent, visit [kent.ac.uk/employability](http://kent.ac.uk/employability)

### Graduation

If you begin your programme in September, your degree results will become available in October 2023.

If you begin your programme in January, your degree results will become available at the next available Exam Board.

Successful graduates are invited to attend a graduation ceremony, known as a congregation, in November at Canterbury Cathedral in south-east England. PSAC staff members usually attend to help you celebrate!

*"I think that my studies at PSAC will greatly improve my employment prospects. There is a very thorough employability workshop series as well as one-to-one career consultations. There are lots of opportunities to interact with professionals in the arts, which also adds to the feeling that we are in the perfect place to make connections, discover career pathways and take the next step into our futures."*

**Alice Helliwell**  
History and Philosophy of Art



# KEY DATES AND CONTACTS

## PSAC contact details

Paris School of Arts and Culture, University of Kent,  
4 Rue de Chevreuse, 75006, Paris  
T: +33 1 76 73 92 81  
T: +44 (0) 1227 824954

Maps and travel directions  
Reid Hall opening hours

Paris Office opening hours  
General queries

[kent.ac.uk/maps/paris](https://kent.ac.uk/maps/paris)  
Monday – Saturday, 8am – 10pm  
August: 9am – 5pm  
Monday to Friday, 10am – 5pm  
[paris@kent.ac.uk](mailto:paris@kent.ac.uk)

## Our academic year

Welcome Week (September)  
Autumn term (weeks 1 – 12)  
Welcome Week (January)  
Spring term (weeks 13 – 24)  
Summer term

19 September – 23 September 2022  
26 September – 16 December 2022  
16 January – 20 January 2023  
23 January – 7 April 2023  
8 May – 17 September 2023

## University websites

Student Support Service  
Student Wellbeing Service  
Student Finance  
Student Guide:

- Moodle
- module information
- student email

Paris School of Arts and Culture

[kent.ac.uk/studentsupport](https://kent.ac.uk/studentsupport)  
[kent.ac.uk/studentwellbeing](https://kent.ac.uk/studentwellbeing)  
[kent.ac.uk/finance-student](https://kent.ac.uk/finance-student)  
[kent.ac.uk/student](https://kent.ac.uk/student)

[kent.ac.uk/paris](https://kent.ac.uk/paris)

# CHECKLIST

## Before you arrive

- ☐ Satisfy conditions of offer (if applicable) – p4
- ☐ Complete enrolment – p4
- ☐ Activate your Kent IT account – p4
- ☐ Pay your fees – p4
- ☐ Apply for visa (if applicable) – p5
- ☐ Investigate accommodation options and arrange viewings – p8
- ☐ Plan your budget – p12
- ☐ Investigate health insurance options – p13
- ☐ Ensure that you have a supply of any regular medication – p13
- ☐ Inform us of any disabilities to allow us to provide support – p15
- ☐ Make your travel arrangements to Paris – p16
- ☐ Select your modules in Kent Vision – p17

## After you arrive

- ☐ Attend the Welcome Week programme – p21
- ☐ Complete the qualification and ID check with Kent staff – p21
- ☐ Open a bank account – p21
- ☐ Arrange insurance (renter's insurance, civil liability insurance) – p21
- ☐ Buy Paris transport card (Navigo Pass) or apply for reduced rate card if you are under 26 – p16

This brochure was produced in August 2022. The University of Kent makes every effort to ensure that the information contained in publicity materials is fair and accurate and to provide educational services as described. However, the courses, services and other matters may be subject to change. For the most up-to-date information, and for our terms and conditions, see [www.kent.ac.uk](http://www.kent.ac.uk)

PSAC, University of Kent, Columbia Global Centers (Reid Hall)  
4, rue de Chevreuse, 75006 Paris, France  
T: +33 1 76 73 92 81 [www.kent.ac.uk](http://www.kent.ac.uk)

University of  
**Kent**