

GETTING STARTED



Monday 26 September

MUSIC INTRO

Colyer-Fergusson Hall & Foyer, 7.30pm

A chance to find out about the different musical activities on campus – meet other musicians and student music societies.

Wednesday 28 September

SINGING AUDITIONS

Colyer-Fergusson Hall, 1-6pm

For Chamber Choir or Vocal Scholarships (sign up for a Chamber Choir audition at Freshers' Fayre and Music Intro).

Wednesday 28 September

CONCERT BAND AND BIG BAND

Colyer-Fergusson Hall, 7.15-9.45pm

Open to ALL woodwind, brass, bass and percussion players.

Conductor Ian Swatman

Thursday 29 September

ORCHESTRA

Colyer-Fergusson, 7.30-9pm

Open to

- String players grade 6 and above
- Advanced woodwind and brass players – auditions held Saturday 1 October

Friday 30 September

SINGING AUDITIONS continued

Colyer-Fergusson Hall, 1pm onwards

Saturday 1 October

ORCHESTRA WOODWIND AND BRASS AUDITIONS

**Colyer-Fergusson Room 1-16,
10am-4pm**

Sign up for these at Orchestra on Thursday 29 September

Monday 3 October

CHORUS

Colyer-Fergusson Hall, 7.30pm

Come and sing, no experience necessary!

Conductor Daniel Harding

www.kent.ac.uk/music





COLYER-FERGUSSON PRACTICE ROOM PERMITS

The Colyer-Fergusson Music Building has four Practice Rooms, each with a piano. It also has a Band Room, which is available for amplified instruments and contains a drum kit

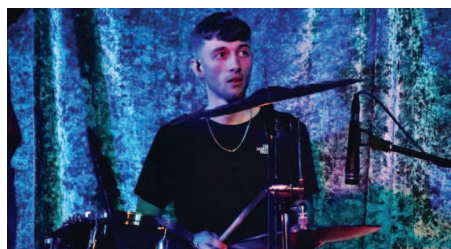
Permits to use the rooms cost £20 for the academic year and are purchased online via the Music website.

UNIVERSITY MUSIC PERFORMANCE SCHOLARSHIPS

To recognise students' involvement in music-making, the University offers music scholarships. More information and applications forms on the Music website.

Applications will only be considered up to 9am on Friday 23 September 2022.

www.kent.ac.uk/music



WHO'S WHO

Daniel Harding
Head of Music Performance
d.harding@kent.ac.uk

Sophie Meikle
Music Administrator
s.v.meikle@kent.ac.uk

Student Music Societies
visit www.kentunion.co.uk

University of
Kent | Institute of Cultural
and Creative Industries
icci