

Welcome to Kent

Stand for ambition.
kent.ac.uk



What we will cover today

Visa and immigration rules and regulations

Planning ahead

- Accommodation
- What to bring with you
- Enrolment and registration
- Tuition and accommodation fees

Your arrival

- Key dates
- Flights and transfers
- Arriving in the UK
- Welcome week
- Things to do

Setting in

- Advice and support
- Living away from home
- Campus life – get involved
- Top tips



Confirmation of Acceptance of Studies (CAS)

CAS team will review the application and conduct financial and immigration history checks.

The student may be asked to:

- Attend a pre-CAS interview
- Submit key documents such as passports, copies of previous/current UK visas/BRPs
- Financial documents
- Confirm intended date of travel

The CAS will show if they have paid any tuition or accommodation fees in advance. If it doesn't then complete this form: www.kent.ac.uk/ems/services/admissions/form.html

Once all checks are completed they will be issued with a pre-CAS, you must check all the details are correct before approving it. Once approved they will be issued with their CAS

Applying for your UK student visa

Key documents the students will need:

- Current international passport/old passport if required
- Original academic documents
- Personal or parent's bank statements showing outstanding tuition and maintenance fees maintained for at least 28 days
- TB test certificate (<https://www.gov.uk/tb-test-visa/countries-where-you-need-a-tb-test-to-enter-the-uk>)
- Marriage certificate and change of name of publication
- Scholarship confirmation letter (if applicable)

Payments:

- Visa fees (<https://www.gov.uk/visa-fees>)
- Health surcharge - GBP £470 per year (you will be charged for the number of years you intend to stay in the UK).

For further information: <https://www.vfsglobal.co.uk>

Biometric Resident Permit (BRP)

Successful applicants will receive a vignette (or sticker) in their passport that will be valid for 30 days. This will allow them to enter the UK and collect their BRP

The BRP confirms their right to study in the UK and access to public services

Collect BRP card within 10 days of arriving in the UK from a designated Post Office or the University

Enter the University's Alternative Collection Location code (ACL code) if collecting BRP at the University

ACL code (Canterbury Campus): 2HE362

ACL code (Medway Campus): 2HE367



Visa rules and regulations

They can:

- Study;
- Work as a student union sabbatical officer;
- Apply from inside or outside the UK;
- Apply to extend your stay;
- Work in most jobs – depending on what level your course is and what kind of sponsor you have; and
- Work for up to 20 hours per week during the term

They cannot:

- Get public funds;
- Work in certain jobs, e.g. professional sports person or sports coach; or
- Study at an academy or a local authority-funded school (essentially, at a government-funded high school)



Planning Ahead



Accommodation: preparing for your arrival

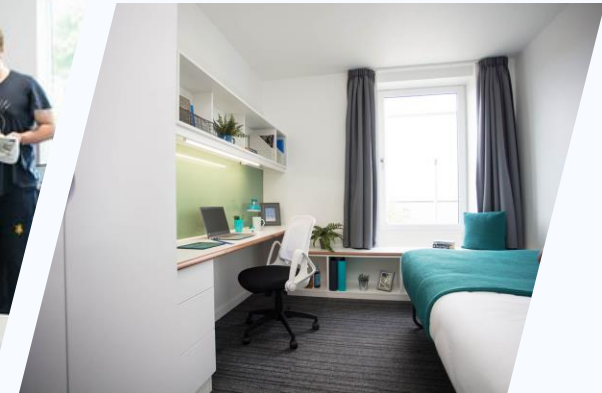
They should have applied by now but late applications will be considered subject to availability

Details of accommodation will be sent from mid-August onwards

Students should arrive from Saturday 16 September

Staggered arrival times. Book an arrivals slot: <https://kenthospitality.kent.ac.uk/MyAccommodation/>. If plans change, they can reschedule your arrival date up to 48 hours before arriving

On arrival they should go to their college accommodation reception to collect keys. They will need to have the arrival pass (this will be given to you once they have booked their arrival slot).



Accommodation: Where to go for help


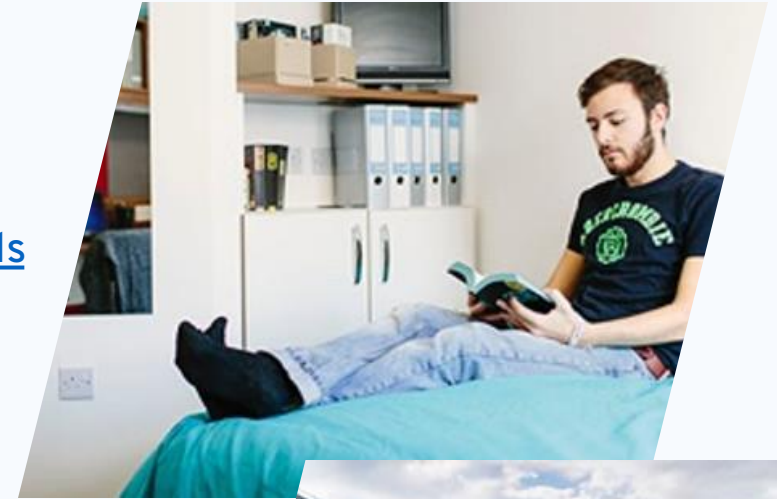
Check the individual campus pages for further details:

- Canterbury: <https://www.kent.ac.uk/accommodation/canterbury/arrivals>
- Medway: <https://www.kent.ac.uk/accommodation/medway/arrivals>
- Paris: <https://www.kent.ac.uk/welcome/welcome-to-paris>
- Brussels: <https://www.kent.ac.uk/welcome/welcome-to-brussels>

The accommodation team: accomm@kent.ac.uk

If they are staying in private accommodation please check the arrival times and procedures with their provider or landlord


Accommodation FAQs: <https://www.kent.ac.uk/accommodation/faqs>



If parents want to come they need to book accommodation as soon as possible. hotels.com, booking.com etc

What to bring with you

- You can only bring as much baggage as your airline will allow, and you will have to carry it all yourself!
- Check what is included in your accommodation agreement.
- Pack enough essential items (toiletries etc) to last a few weeks. Clothing, stationery etc can be purchased easily.
- Prepare for changeable weather, but it's not as bad as you may have heard!
- Bring some cash
- Pack photocopies of key documents in your hand luggage: passport, visa documentation, qualifications and insurance documents
- Large electronics (hair dryers, iron, kettle etc), kitchen items (cups, plates), as most can be purchased in the UK
- The UK uses 3-pin plugs Bring adaptors if needed!



The best bit of advice I received was to bring decorative items - it makes the room that bit more comforting and homely and can help with the homesickness

Packing advice: Useful tips

Packing list - a helpful guide of what to bring with you:

https://media.www.kent.ac.uk/se/28289/LT_132033_UniKitOut_packinglist_A5_FINAL_web-unlocked.pdf

What's included in your campus accommodation - use this check list to find out what will be provided:

<https://www.kent.ac.uk/accommodation/canterbury/living-on-campus#included>

UniKitOut - a specialist suppliers of student essentials and university packs and provide a one-stop-shop for all the things you may need when moving away from home. They have a wide range of products, from essentials like crockery and clothes hangers to items which make your room more homely.

<https://www.kent.ac.uk/accommodation/canterbury/arrivals/unikitout>

Enrolment and Registration

Enrolment

They will receive an email via the portal letting them know when they can enrol, they will be asked to complete an online enrolment form.

When is the enrolment deadline?

Some schools/courses have a personalised deadline, but most adhere to the same deadline each year in mid October . The [enrolment deadline](#) can be found on the how to enrol webpage.

Registration

This will be completed in person at the [Arrivals Hub](#) (Canterbury) or the [Gillingham building reception](#) (Medway).

[Canterbury Arrivals](#)

[Medway Arrivals](#)

Once registered you will receive instructions on how to activate your Kent IT account

PLEASE REMEMBER THAT YOU WILL BE REQUIRED TO COMPLETE BOTH THE ENROLMENT AND REGISTRATION PROCESSES. YOU MUST DO THEM IN ORDER TO START YOUR STUDIES

Paying Tuition and Accommodation Fees

After registration they will be given details about paying their tuition fees and accommodation costs

Tuition costs


- They can pay the full amount at registration or 50% at registration and 50% before 1 December

Accommodation costs

- They can pay the whole year in full at registration or pay in termly instalments

Payment methods

- International bank transfer
- Online by credit/debit card
- Western Union



Tip: Some internet banking cards are worth investigating eg Monzo, Starling, Revolut, Monese

Your Arrival

Key dates and plans for welcome week

Stand for ambition.
kent.ac.uk



Planning Ahead / Key Dates for September 2023 intake

**Arrivals
Weekend**

**16-17 Sept
2023**

Welcome Week

**18-22 Sept
2023**

Autumn Term

**25 Sept – 15
Dec 2023**

Spring Term

**15 Jan – 5
Apr 2024**

Summer Term

**6 May – 14
Jun 2024**

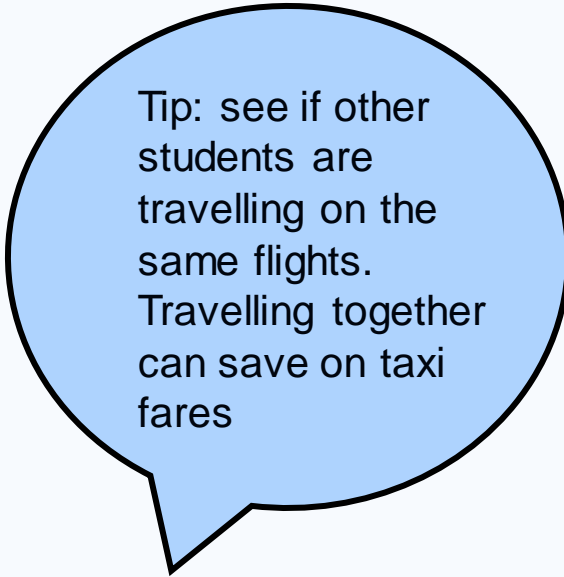
Flights and airport transfers

Flights

- Book flights, the nearest airports are Heathrow or Gatwick

Airport Transfers

- Airport collection: students can book a shuttle service from Heathrow or Gatwick on either 16 or 17 September 2023. The service will meet students whose flights arrive between 05.00hrs – 17.00hrs, and travel to the Canterbury and Medway campuses. The price is £45 per person.
- Online booking available: <https://www.kent.ac.uk/welcome/international-students/arrange-your-travel>
- Can arrange own transfer to campus - either train, taxi or bus



Tip: see if other students are travelling on the same flights. Travelling together can save on taxi fares

Welcome Week

Many events during the week including:

- Global Hangouts
- School orientation events throughout the week
- Services for Students Online Showcase (welfare, careers)
- Kent Union events – society and club fairs
- Trips around the local area
- Sports centre – registration and sign-up to classes and clubs

Students will receive personalised Welcome Week events calendars

Check the events calendar:

<https://www.kent.ac.uk/welcome/welcome-week>



Welcome Week 2022



Life as a Kent Student

Providing an inspirational student
experience

Stand for ambition.
kent.ac.uk



Enriching Student Life

Vibrant atmosphere

- Over 20,000 students
- 85% undergraduate, 15% postgraduate
- 16.5% from outside of Europe
- 164 nationalities represented

Active social life

- Over 100 student societies
- Dozens of restaurants, bars, cafes



Campus life offers you the best of both city and country living



Societies and Clubs



Settling In

Culture shock

It is to be expected

It can be hard, but it does get easier!

How to make things easier

Stay in touch with friends and family at home

Eat well, sleep well

Try to develop a domestic routine

Bring some of your favourite things from home – food, makeup etc.

Get involved

Find likeminded people, make new friends

Share your culture and traditions with others and learn about theirs!

Remember support is available!!!!



Supportive Environment

- Active student union
- Student advisers:
 - Visa advice
 - Accommodation problems
 - Budgeting, financial advice, money worries
- Student Support:
 - Disability Support
 - Medical Centre
 - Wellbeing
- Academic Advisors
- Pastoral support
- International Office
- Free English language support



Settling In – some Tips

Channel your inner tourist

- Canterbury
- Rest of Kent
- London
- Edinburgh
- Cardiff
- York
- Ireland
- The rest of Europe!



The county of Kent is stunning and there is much to do and see. You'll have easy access to London too – under 1 hour by train – with a little planning you have the whole of Europe to explore. And it doesn't have to cost much; you can fly from London to many places in Europe for under £100.



Learn to love.....

Queueing - British people will queue for pretty much everything

We dislike when people don't queue properly...
...but secretly enjoy complaining when that happens!

The weather - It's not as bad as you think

Brits love to talk about the weather. All the time.

Tea - we drink a lot of tea!

British people spontaneously demonstrate 'queuing superpower' at Ed Sheeran gig



2 Comments



People queue without barriers at an Ed Sheeran concert at the O2, London CREDIT:

Food.... not as bad as you think!

Embrace local food options

The UK is famous for fish and chips and roast beef.
However, it's not all we eat...

- Canterbury has some great speciality food shops:
 - Thai / Asian supermarkets
 - Vegetarian / health food shops
- Kent is the “Garden of England” – great fresh fruit and vegetables
- UK is very international – easy to try new cuisines – e.g. Turkish, Greek, Polish
- Cook for your flat mates!



What Next?

- Further study
- Kent Careers and Employability Service
- Kent Extra
- Graduate Route

Work in the UK for 2 years (or 3 years for PhD students) after graduation and gain valuable international work experience!



Resources

WELCOME TO KENT:

<https://www.kent.ac.uk/welcome>

ENROLMENT:

<https://www.kent.ac.uk/guides/using-kentvision/how-to-enrol>

TRAVELLING TO
KENT:

<https://www.kent.ac.uk/welcome/arrivals-guide/travelling-to-kent>

ACCOMMODATION:

<https://www.kent.ac.uk/accommodation>

INTERNATIONAL:

international@kent.ac.uk

**Thank
you.**

