

FAITH AND WORSHIP 2025-26

University of
Kent

Chaplains and faith communities at Canterbury and Medway campuses providing support and opportunities for all students and staff.

Places to pray on campus

Eliot College Chapel

Kent University has its own chapel, located on the ground floor of Eliot College.

The Chapel is warm, comfortable and modern, and is used for informal meetings and Christian services at various times throughout the week. It's also a good place to sit quietly or to talk things through with friends.

Eliot College Chapel is located at the bottom of some stairs (or a lift) which you can find easily if, having entered the main Eliot entrance, you turn left past the College Reception and continue through the double doors.



Kent University Christmas Carol Service in the Cathedral: be part of this magical experience!

This year our Carol Service in the Cathedral will be on Monday 8 December, 19:30. The service, led by members of the Religious Societies and various student choirs is the most popular event in the University's annual calendar and is attended by large numbers of students and staff.

Look out for announcements about when free tickets will be distributed. If you would like to be a volunteer steward this year, and are likely to be free both in the evening and afternoon of Monday 8 December and for a short training session, please email S.C.E.Laird@kent.ac.uk



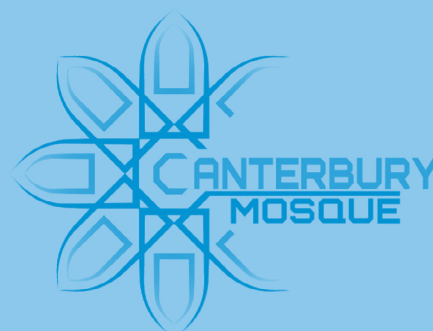
Making friends after a Sunday Service on campus.

The Mosque and the Prayer Room

canterburymosque.co.uk

Canterbury Mosque is situated close to the centre of the campus on Giles Lane, behind the Sports Halls.

There is also a Prayer Room in Rutherford College (Cloister Seminar Room 18). The Medway Faith Space is located on the ground floor of the Pilkington building.



PEOPLE

Anglican 'C of E'

Revd Dr Stephen Laird Dean of Chaplains

Rutherford Chaplaincy
Rutherford E4 N1
(left, above the Dining Hall)

☎ 01227 763373
☎ 07970 438840
✉ S.C.E.Laird@kent.ac.uk



Stephen is always happy to connect with students and members of staff, whether by appointment or at events like the Sunday midday 'Let's Talk about Church!' socials in Eliot College Chapel and on the Chaplaincy-ResLife coach trips. Stephen enjoys advising students who want to progress towards some form of Christian ministry (including ordination in the Church of England); and supporting those considering getting Baptised or Confirmed. Stephen is assisted by Andrea Koenders, and by the Revd Dr Stacey Rand, Senior Research Fellow in the Personal Social Services Research Unit.

✉ S.E.Rand@kent.ac.uk

Medway Chaplaincy

In the first instance contact a member of the Canterbury team for advice about Chaplaincy support on our Medway campus

Pentecostal

Dr Aaron Berko Darwin Chaplaincy Darwin B.3.25 newlifecanterbury.org

☎ 07885 956528
✉ A.Berko@kent.ac.uk



Aaron is Senior Minister of New Life Pentecostal Church which meets on campus on Sundays in term-time at 11am in Woolf Lecture Theatre, Woolf College. In addition, New Life Church offers high quality streamed content. Aaron supports Connect Groups and other midweek courses for anyone wishing to know more about the Christian faith. See 'New Life Group' on the 'Some Groups' page opposite.

Jewish

Rabbi Zalman Lewis

☎ 07779 008268
✉ zalman@chabadsussex.org



Zalman extends a warm hello to all Jewish students and staff. As director of Chabad SE Coast Universities, he visits the University each Tuesday during term-time, hosting a Lunch'n'Learn for members of Kent University's Jewish community. He is available for one-to-one meetings on Tuesday afternoons. Zalman also hosts a range of Jewish Holiday celebrations and other events throughout the year and works in close partnership with the Jewish Society (see opposite)

Muslim

Dr Sinan Rawi

☎ 01227 713504
✉ drsrawi@gmail.com



Sinan has long standing academic connections with Kent University and our neighbouring institutions as well as being involved with the leadership and governance of Canterbury Mosque in Giles Lane, close to the University's Canterbury campus.

Catholic

Fr Mark Wharton

Eliot College S3 W1
(on the walkway level within Eliot Hall, within the stairwell to the right)
cathsoc.org

✉ M.Wharton@kent.ac.uk
✉ markwharton@rcaos.org.uk
f UKCCATHSOC



Fr Mark is Catholic Chaplain. Holy Mass at 18:00 Sundays takes place in Eliot College Hall, followed by dinner. It is preceded by Confessions and Adoration from 17:00. On weekdays Mass is in Eliot College Chapel: Monday, Tuesday and Wednesday at 18:00, with Adoration and Confessions from 17:00. On Thursdays, Holy Mass is at 13:05, with Adoration and Confessions from 12:00, and followed by lunch. On Tuesdays, the CATHSOC (see opposite) meets after the 18:00 Mass for pizza and formation

Buddhist

Dr Dinkar Sharma

☎ ext 3084
☎ 01227 823084
✉ D.Sharma@kent.ac.uk

blogs.kent.ac.uk/meditationkent



Dinkar is on the teaching staff of the University and runs a weekly meditation group on campus. The meditation group meets every Wednesday evening on the Canterbury campus and has done so for over 25 years. All are welcome, staff, students, visitors and residents. All are welcome to come as often or as occasionally as they wish to take the opportunity to refresh the mind and to develop their meditation practice.

Everyone is welcome to join our day trips by coach!

Chaplaincy is visiting Bodiam Castle and Rye on Saturday 18 October. Other trips are arranged throughout the academic year.

...and everyone is welcome to our Chaplaincy daytime socials on campus – watch out for more details.



SOME GROUPS

Cathsoc

The Catholic Society meets each week on Tuesday evenings for Adoration at 17:00 with Confessions; and Holy Mass is at 18:00. Our meeting begins at 19:00 with Pizza, and is followed by a weekly formation programme. We often host visiting speakers, regular pilgrimages and trips. Everyone is welcome so do come and join us.

Chaplain: Fr Mark Wharton

✉ M.Wharton@kent.ac.uk
✉ markwharton@rcaos.org.uk
f UKCATHSOC

Anglican Chaplaincy

If you want to be part of a Christian group which is outward looking, tolerant and diverse, then look no further. This year we are resuming a full programme of meetings and discussions, movie and pizza nights and the most talked about day trips by coach on campus! Meet us on a Sunday at the 'Let's Talk about Church!' social event at lunchtime in Eliot College Chapel.

Chaplain: The Revd Dr Stephen Laird

✉ S.C.E.Laird@kent.ac.uk

Assistant: Andrea Koenders

New Life Group

newlifecanterbury.org

New Life group exists to foster friendship and fellowship amongst Christians and others who are involved in New Life Pentecostal Church in Canterbury. We have midweek groups ('Connect Groups') and occasional social events. For international students wanting to develop their English there are friendship groups for conversation practice. Become more aware of what it means to be loved by God and work this out in practical ways!

Chaplain: Aaron Berko

✉ A.Berko@kent.ac.uk

Islamic Society

ISOC seeks to enhance the spiritual, social and academic well-being of students at Kent. There are regular lectures and socials as well as special events including Charity Week, and Islam Awareness Week through which we seek to demystify Islam among non-Muslims as well as deepening our own understanding. ISOC is affiliated to the Federation of Student Islamic Societies.

f ukcisoc

Jewish Society

Kent University JSoc welcomes Jewish students, along with anyone who is interested in finding out more about the Jewish way of life. We meet for Friday night meals and social gatherings and to celebrate the major Jewish holidays. We are an international society and have a warm and friendly atmosphere. Kent JSoc is part of UJS (Union of Jewish Students).

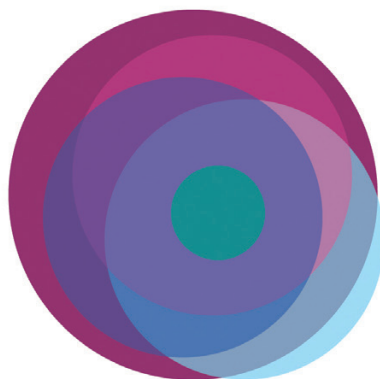
Chaplain: Rabbi Zalman Lewis

✉ zalman@chabadsussex.org

Inter Faith Week

9-16 November

www.interfaithweek.org



Look out for announcements about gatherings and opportunities for faith groups on campus!

Kent Students' Union Faith Network

Additional student-led faith groups can be contacted via Kent Students' Union's Faith Network and Societies pages. Find your group via ksu.co.uk/activities or start a new one!

In 2025 societies listed included Shia Muslim, Hindu, Sikh, Christian Union and a number of global Christian groups.

Campus Christian Council

We meet as representatives of the Christian groups listed here, along with several others active on the campus. We aim to encourage communication between the groups and traditions. Why not get involved?

Contact: The Revd Dr Stephen Laird

✉ S.C.E.Laird@kent.ac.uk

More groups active in the local community

Canterbury and District Interfaith Action

✉ candifa123@outlook.com

East Kent Humanist

✉ r.j.norman@kent.ac.uk

Chinese Christian Fellowship: a city-wide fellowship of Christian students with links to China

<https://ccccuk.org>

FAITH AND WORSHIP

Sundays on campus with the Chaplaincy

Let's Talk about Church!

An occasional Sunday lunchtime social event in Eliot College Chapel. Watch out for posters and announcements during term time, and join us for a free lunch!

Catholic

Sunday at 18:00 – Holy Mass at Eliot College Hall, followed by dinner. Adoration and Confession from 17:00.

Pentecostal

Sundays at 11am in Woolf College Lecture Theatre (with refreshments). See also kent.ac.uk/chaplaincy/weekly-services

Muslim Friday Prayers

Fridays at 13.15 – Canterbury Mosque, which is independent of the University, is located on Giles Lane at the back of the Sports Halls.

Some weekday services and meetings

Catholic

The Catholic community gathers for Mass and other events frequently during the week in term-time. For details see Fr Mark Whaton's entry on page 2.

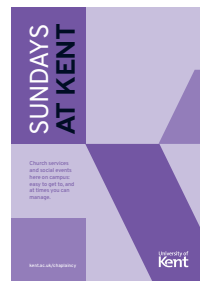
Buddhist

Wednesdays 18:30 to 20:00 meet at Keynes Reception. Theravada meditation group led by staff members. Contact Dinkar Sharma at d.sharma@kent.ac.uk

Jewish, Hindu and Sikh

Contact the relevant Society via Kent Union Faith Network (see inside).

Sundays at Kent University



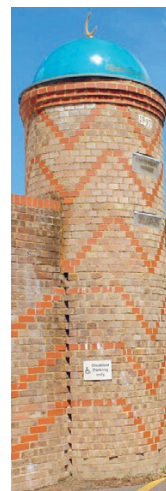
You don't have to look far to find a church or enjoy Christian fellowship on Sundays – there is a choice of worship and hospitality on Sundays in term-time on the Canterbury campus.

See the listings opposite, or check out the Sundays at Kent leaflet for more details of Church of England, Catholic and Pentecostal services and events provided by the University Chaplaincy.

These are at times you can manage (later in the day than in most places!) with an emphasis on opportunities for socialising, usually with food and drink.

Chaplains will also be able to help you find a suitable church in town. Most Christian denominations are represented in Canterbury.

Canterbury Mosque



The mosque is identifiable from the small minaret and blue dome on Giles Lane behind the Sports Halls on the Canterbury campus.

On the Medway campus the multi-faith prayer space is located in the Pilkington Building (ground floor).

Religious observance

Please ask for the *Academic Commitments and Religious Observance* leaflet if you are anxious about timetable clashes with faith-related obligations.

All the chaplains are here to help and can give information and advice about other sources of support and counselling.

For more information visit kent.ac.uk/guides/religious-observations



CONTACT

kent.ac.uk/chaplaincy

Chaplaincy
Rutherford College
University of Kent
CT2 7NX