



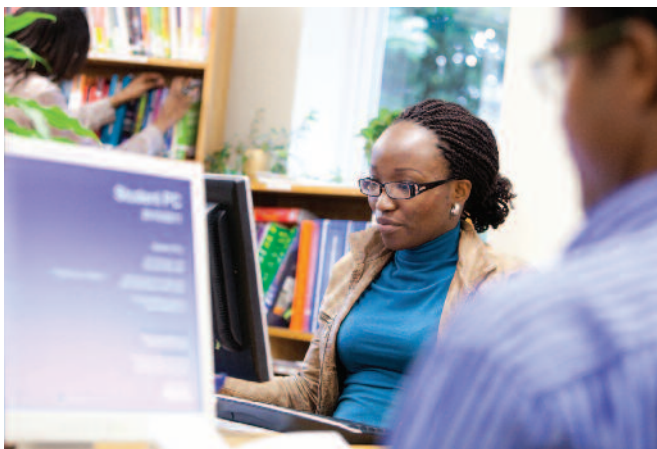
INTRODUCTION TO MASTER'S-LEVEL STUDY

Academic Threshold Concept

Online short course

INTRODUCTION TO MASTER'S-LEVEL STUDY

The Academic Threshold Concept online short course introduces you to the concepts and skills required for successful study of the Master's programmes delivered by Kent's Centre for Professional Practice (CPP). Participating in the course gives you the opportunity to develop new skills or revise skills you have learnt in the past but have not used for some time.



CPP's programmes build on your professional knowledge and skills, underpinning them with theories and research in the areas of evidence-based practice, learning and development, and inter-professional working.

About the course

The course is a self-guided study resource, comprising two parts, plus a third part for those wishing to gain academic credit.

- Part 1: an introduction to the skills needed to research and write assignments at Master's level
- Part 2: an introduction to concepts of learning at Master's level
- Part 3: assessment details (only required if seeking to gain academic credit).

From the course, you develop skills in the following areas:

- the ability to communicate clearly in written formats in academic and professional workplace settings
- manage complex information effectively and present this using a comprehensive range of learning resources
- demonstrate a capacity for autonomous learning and the ability to access professional resources as appropriate.

By the end of the course, you will be able to:

- understand and demonstrate the academic concepts required to advance professional practice in regard to scholarship
- apply the conventions and techniques of academic writing to interpret knowledge and practice within a professional context

- develop academic writing and critical reasoning capabilities.

For those wishing to gain academic credit

Part 3 contains the assessment details to obtain academic credit for the short course. There are two written assignments of 1,000-2,000 words, including a report critically evaluating research on a topic connected with your own professional practice. The topic and type of academic writing is to be discussed in advance with the module convenor to assess its suitability.

On successful completion of Parts 1, 2 and 3, you are awarded 15 credits.

Entry requirements

There are no formal entry requirements for Parts 1 and 2 of this short course. On successful

completion of this course, you may choose to progress to the Centre's Master's programmes.

As this is an online short course, no attendance is required. To access it, you use a virtual learning resource on Moodle, the University of Kent's Virtual Learning Environment (VLE).

Fee

You can purchase Parts 1 and 2 at a total cost of £100 (this is a non-credit bearing option).

For those wishing to go on to gain academic credit, the cost for Part 3 is £550.

How to purchase

The online course can be purchased from the University's online store: <http://store.kent.ac.uk>

Centre for Professional Practice

The Centre for Professional Practice offers part-time, flexible, work-related learning within higher education. Our programmes and courses have been specifically designed to meet the needs of working professionals who wish to develop their academic ability while maintaining their professional role.

University of Kent

Kent is one the UK's leading universities, ranked 23rd in *The Guardian University Guide 2017*

and *The Complete University Guide 2017*. In the Research Excellence Framework (REF) 2014, we were ranked 17th for research intensity, outperforming 11 of the 24 Russell Group universities. All of our academic schools are engaged in research of international standing.

How to apply

Please contact:
 Programme Co-ordinator,
 University of Kent,
 Centre for Professional Practice,
 M3-12 Medway Building,
 Chatham Maritime,
 Kent ME4 4AG
 T: +44 (0)1634 888929
 E: atccpp@kent.ac.uk
www.kent.ac.uk/cpp



“The way the course breaks down the different stages of planning and creating an assignment is really clear and beneficial to all students – especially those with learning difficulties.”

Veronica Huckle
 Dyslexia Adviser

CONTACT US

Centre for Professional Practice,
University of Kent,
Chatham Maritime,
Kent ME4 4AG

T: +44 (0)1634 888929

E: cppedway@kent.ac.uk

For the latest information on our courses,
please visit www.kent.ac.uk/cpp

This brochure was produced in November 2016. The University of Kent makes every effort to ensure that the information contained in its publicity materials is fair and accurate and to provide educational services as described. However, the courses, services and other matters, may be subject to change. For the most up-to-date information, see www.kent.ac.uk/pg and www.kent.ac.uk/termsandconditions

University of Kent, The Registry, Canterbury, Kent CT2 7NZ
T: +44 (0)1227 764000 www.kent.ac.uk/pg

University of
Kent